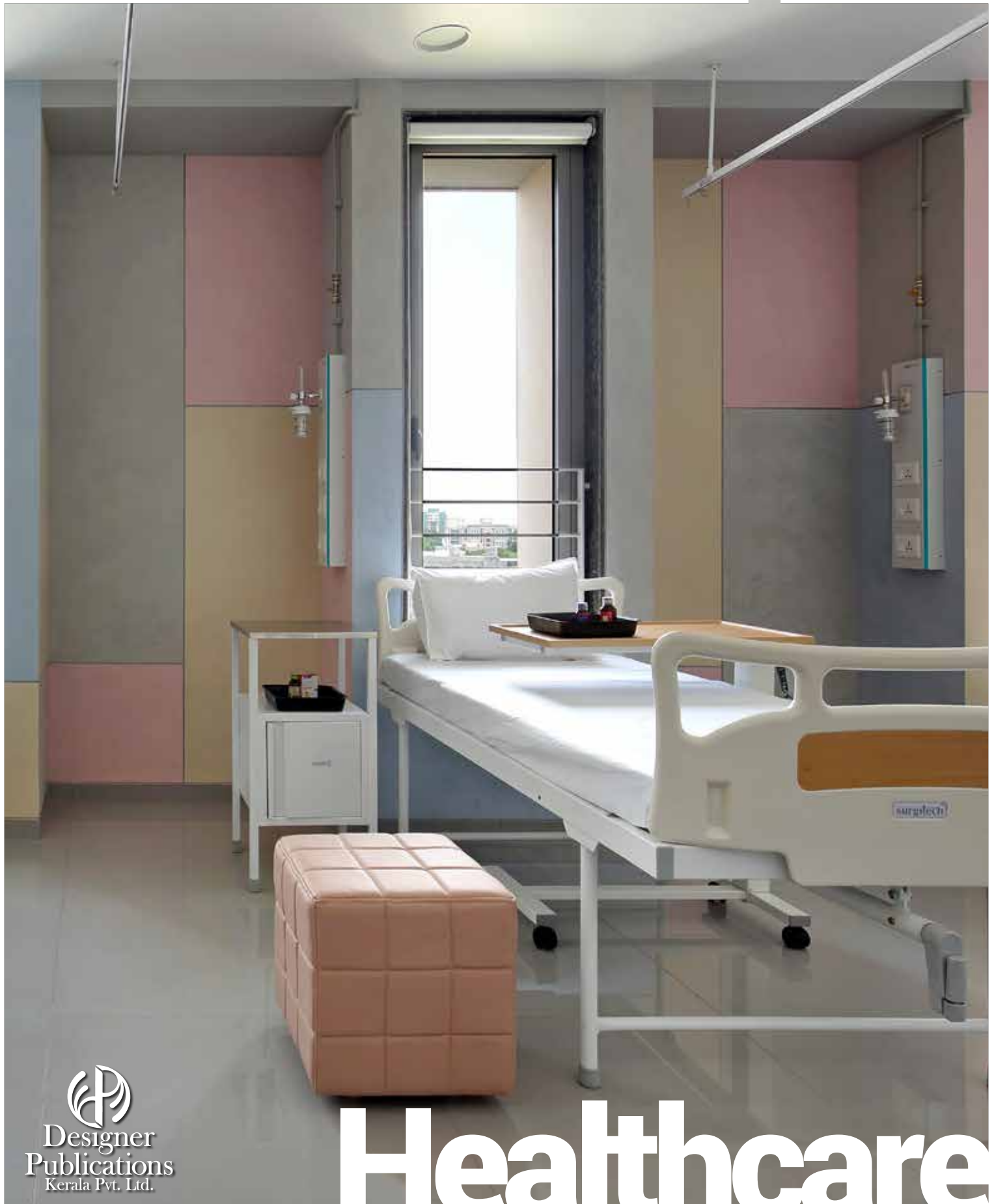


INSTITUTE<sup>®</sup>  
OF INDIAN  
INTERIOR  
DESIGNERS

# Inscape

THE OFFICIAL PUBLICATION OF IIID

AUG 2020 VOL. 01 ISSUE 07 ₹100



  
Designer  
Publications  
Kerala Pvt. Ltd.

# Healthcare

# Stay safe @home

## we shall come to you

Dear Readers, We value your health and safety and in the wake of **COVID-19** pandemic, we wish you to stay safe at home. To keep you engaged and posted about the latest trends and happenings in the world of architecture and design we have decided to provide architecture enthusiasts with access to our E-edition on our website [designndetail.in](http://designndetail.in)



  
**Designer  
Publications**  
Kerala Pvt. Ltd.

Don't hold hands  
**Join hearts**



The Original flows harmoniously  
with the environment.



**The Max Exterior panel. The Original.**

**INNOVATIVE. SUSTAINABLE. CREATIVE.  
GIVE YOUR BUILDINGS CHARACTER.**

- Easy to clean. Anti-bacterial.
- Designed to withstand extreme weather conditions.
- Rear ventilated system to provide heat & sound insulation.



**FunderMax India Private Ltd.**

Tel.: +91 97318 14446 | E-mail : [officeIndia@fundermax.biz](mailto:officeIndia@fundermax.biz) | [www.fundermax.in](http://www.fundermax.in)

**FUNDERMAX**

for  
people  
who  
create

exterior

KAM Early Years, Bangalore. Photographer: Anure Panthome, Noughts and Crosses, LLP



Cover image Courtesy:  
Tejas Shah

Publisher : L. Gopakumar

#### Editorial Board

Managing Editor : Jabeen L. Zacharias, *National President - IIID*  
Editor : Shamini Shanker Jain  
Editorial Advisors : Jignesh Modi, *Hon. Secretary - IIID*  
Sajan Pulimood, *NEC Member - IIID*  
Co - Editor : Dr. Rema S Kartha

#### Editorial Team

Associate Editor : Farhaan Mohammed  
Content Writer : Jayakrishnan Ranjit  
Creative Director : Jiju Sarang

Contact : farhaan@designerpublications.com  
inscape@designerpublications.com

#### Space Marketing

Assistant General Manager : Nitha Oommen  
Manager : Sangeetha Usha

Contact : marketing@designerpublications.com

#### Corporate Office:

Designer Publications Kerala Pvt. Ltd.,  
39/4722, DPK Towers, R. Madhavan Nair Road, (Old Thevara Road),  
Kochi-16, Kerala Ph: 0484-2360304, 2367111

#### FOR ADVERTISEMENTS

Contact:  
stinupeter@designerpublications.com  
sangeetha@designerpublications.com  
+91 9995236814, +91 7356639444

Copyright : All rights reserved by Designer Publications Kerala Pvt. Ltd. . Any part of this publication may be reproduced only with the written permission from the Editor. The Editors do their best to verify the information published but do not take responsibility for the absolute accuracy of the information. All objections, disputes, differences, claims & proceedings are subject to Ernakulam Jurisdiction.

Published by

  
**Designer  
Publications**  
Kerala Pvt. Ltd.

## AUTOTEC – Automatic Sliding Solutions by Häfele

Effortless operations, smart ergonomics and elegant aesthetics are considered as essentials when it comes to automatic sliding solutions. The computer-supported technology of the Autotec Sliding Series provides diverse functionality and greater reliability with its various options of opening and closing the door, including the ideal touchless application for entrance doors of public places, ensuring zero exposure to infections! Loaded with functional features like modern automation, easy customisations, buildable configurations and reliable operations, the automatic sliding systems falling under this series are compatible for use in different areas like commercial business centres and corporate parks, shopping malls and cafes, hotels and restaurants, airports, Institutions and metro/ railway stations. The advanced software structure of these systems consists of a special braking function that ensures faster opening and closing cycles which inherently minimizes energy loss thereby including a permanent, integrated energy saving feature irrespective of the season. In extreme temperature conditions, the half opening mode can also be activated to include an additional energy saving element into the operation.



# con tents



07	Editorial
09	President's message
10	Your Health Needs Attention
12	A soothing medley of colours
22	Juxtaposed & Vivid
32	Crafted & Sophisticated
40	A Place to Heal
50	Curating Change
60	Creating art for comfort
68	'La Seine' Zen
78	Tantalizing Canvas
82	Remembering the Holistic Visionary Ar Revathi Kamath
84	IIID Chapter News
96	Readers Respond



## Editorial

The saying goes... "The first wealth is health". August 2020 INSCAPE covers a typology most prolifically covered in our conversations today, the state of our HEALTHCARE. There is no dearth in innovation in the design arena regarding this. Whether it be hospitals in urban areas or health centres in the villages, architects and designers are surpassing all expectations, understanding the human psyche at this point of mixed emotions: of anxiety, of healing and of hope: balancing thereby the emotional quotient with the highest form of happiness, upholding what the Dalai Lama says "Happiness is the highest form of Health".

Kejul and Harsh Patel of Increation Associates have anchored their feel- good spaces around the notion of understated luxury: the colour palette of browns and greys get a sudden burst of energy with bright accents of furniture, colourful walls and flora.

Dev Children's Hospital by Usine Studio, Vadodara has demonstrated that soft colour palettes, playful figurines on the walls reminiscent of a child's play school distract their anxieties.

In a similar manner, Shailaja Harish Design Studio's Indovasc Hospital reflects a happy space. Therapeutic and crafted with sophistication, a healing environment has many aspects to be addressed.

On a larger scale, I M Kadri's Symbiosis & Research Centre is an example of meticulous planning. The building is bathed in natural light, the amalgamation of materials creates a homely relaxed atmosphere, sophistication in colour and detail, conscious control of light and the presence of biophilic spaces around vantage settings, makes the project worth reckoning.

Flying Elephant has intelligently steered the project brief into an oxymoron: simple yet complex. The Dharmapuri health centre in Tamilnadu has shown us how efficiency and functionality on a shoestring budget can make for a healing, relaxed and comfortable environment. A combination of interesting elements and basic materials have addressed the outdoor indoor binary which is so much a part of their lives.

However, to top it all is the unconventional Adamant Psychiatric Hospital in Paris designed by Gerard Ronzatti of Siene designs. "Existing notions of confined care is redefined to adopt a more open, warm and welcoming atmosphere, a testimony of how architecture and design can bring about a more positive effect on the subconscious mind thereby enhancing the prescribed treatments".

We introduce our artist of this month Nikhileswar Baruah from Assam. His works are ethereal, bold, theatrical and monolithic. It grabs attention to a complexity that exudes brilliance.

We pay our tributes to Architect Revathi Kamath. We thank her for introducing the term eco- friendly architecture to the many generations whom she has inspired.

Enjoy INSCAPE!

Happy reading!

Shamini Shanker Jain

Announcing

# INDIAN PLUMBING PROFESSIONALS LEAGUE 2020

Learning ▶ Knowledge ▶ Quiz  
"A Competition To Unite"



ON VIRTUAL PLATFORM FOR THE FIRST TIME



So take the liberty to  
**LFH (Learn From Home)**

**26<sup>th</sup> September - 22<sup>nd</sup> November 2020**  
Sessions only on every Saturday/Sunday\*

## TAKEAWAY FOR PARTICIPANTS

- Complimentary copy of Indian Plumbing Today every month & IPA e Newsletter
- IPA Professional Membership worth ₹ 3500/-
- READ ONLY**
  - Uniform illustrated Plumbing Code-India
  - Uniform Solar Energy, Hydronics and Geo Thermal Code-India
  - Uniform Swimming Pool Code-India
- Complimentary soft copy of AGGPP
- Professional advancement on codal based plumbing



## WHO SHOULD PARTICIPATE

- Architects & Interior Designers
- Real Estate Developers
- MEP Consultants
- Plumbing Engineers
- Plumbing Contractors/PMCs
- Technical Institutes
- Manufacturers etc.

Participation Charges : IPA Member @ ₹ 2500 + GST | Non IPA Member @ ₹ 3500 + GST

**PRIZES**  
Cash Rewards In lieu of Foreign Tours to all National Winners  
Cash Rewards in every session



### Supporting Organisations



### Media Partners



For participation and more details, please contact

**Pravin Bora**  
Convener, IPPL Committee  
Chairman, IPA Pune Chapter  
Email: pune@indianplumbing.org

**Sushanta Sinha**  
General Manager – Marketing & Events  
IPAHQ  
Email: gm.events@indianplumbing.org

\*Exact schedule will be shared with the participants



www.indianplumbing.org

## President's message



NSCAPE brings you an issue on Healthcare; At a time when 'health' seems to be the single most important topic of for all discussions. Usually the word 'Health' brings to our minds two heavy words: disease and death. I seriously think as Designers our first aim should be to redefine health and healthcare through our designs.

My first project in Health (1995) was to renovate one of the biggest super speciality hospitals in Kerala. For my first meeting, as I moved across their huge reception, along the widest of corridors, consultation docks, general services decks and the many people waiting for their appointments to finally reach the MDs cabin on the top floor, I was speechless. Marble floors, polished granite counters, clad walls, centrally airconditioned, crisp graphics, spic span spaces, and the stunning colour scheme—White Grey & Black. **It was all 'done' already!**

Sitting across their Board and asked How are you? I said I am not fine. (Well, that is what often surprises me. "How are you? I am fine; How are you?" Even today I for one say how I really am, and people are taken aback like on that day too.) In the discussions that followed I said your hospital tells people who come here for help that **'they are already done'**! What your cold crisp grey spaces tell them is about disease and death with such finality and not tomorrow. The diagnosis is handed to them right at the first step! There is no message or promise of hope or healing. In 15 months, we made 'the premises' healthy – hopeful and healing. Natural lighting, windows and views, interactive fun spaces, courtyards, gardens, aquariums, artwork, and colour power!

Today, as per revised definition of WHO, 'Health is a resource for everyday life! Ability to maintain homeostasis, recover from insults, handle stress, acquire skills, maintain relationships, all of which form **resources for resiliency and independent living**. Let us as Designers redefine Healthcare institutions as Resilient Spaces!

Enjoy reading!

Jabeen L. Zacharias

Write to Inscape about your ideas on 'Healthcare' in 800 words with your photo attached, on or before the 28th of August. Your contribution will be acknowledged. If selected, you shall be featured in the next Issue of Inscape.

Mail in your thoughts to [inscape@designerpublications.com](mailto:inscape@designerpublications.com)

Congratulations **Radhika Jhamaria** for your insightful perspective on 'Schools'.

Read your article on page 96.



# Your Health Needs Attention

We are at a time when our hopes are being tested, a pandemic situation like COVID-19 has awakened our minds bringing many changes to our lifestyle, especially in taking care of our health. Everything in life is subject to change, and life is dependent on our health. In order to function better in the present but also prepare for the future, taking care of our health is essential. Therefore designing these environments or healing spaces are also vital for our betterment, for the survival of our species.

From hospitals to medical rooms, healthcare needs specialized care, and architects are being challenged every day to construct well-designed spaces that are visually appealing and functionally organized. The design affects those who encounter it physically or mentally, and it becomes a factor in the process of recovery and well being.

Explore these kind-hearted and caring designs discussed in this issue of Inscape on Healthcare.





# A soothing medley of colours

Inscape Insider Maulik Patel

## PROJECT INFO

PROJECT NAME : ALVURA CLINIC  
DESIGN PRACTICE: INCREATION ASSOCIATES  
DESIGNER : KEJUL PATEL & HARSH PATEL  
CLIENT NAME : DR. RISHIRAJ YADAV (PLASTIC SURGEON)  
PROJECT AREA : 2600 SQ.FT.

“

A well-designed spatial organization with colourful interiors that helps ease the treatment process. Overall the space provides a sense of comfort, positivity, varied colour and enough private space

The space one lives in have a big impact on a person's overall health and well-being, especially when the space we are discussing is a healthcare facility. As the many studies based on the social impact of built environments stated, a design based on the user-specific needs such as spaces that provide plenty of natural light help patients to recover more quickly. The project Alvura Clinic by Increation Associates is a paragon for the great interiors.



Reception and waiting display a vibrant mix of materials

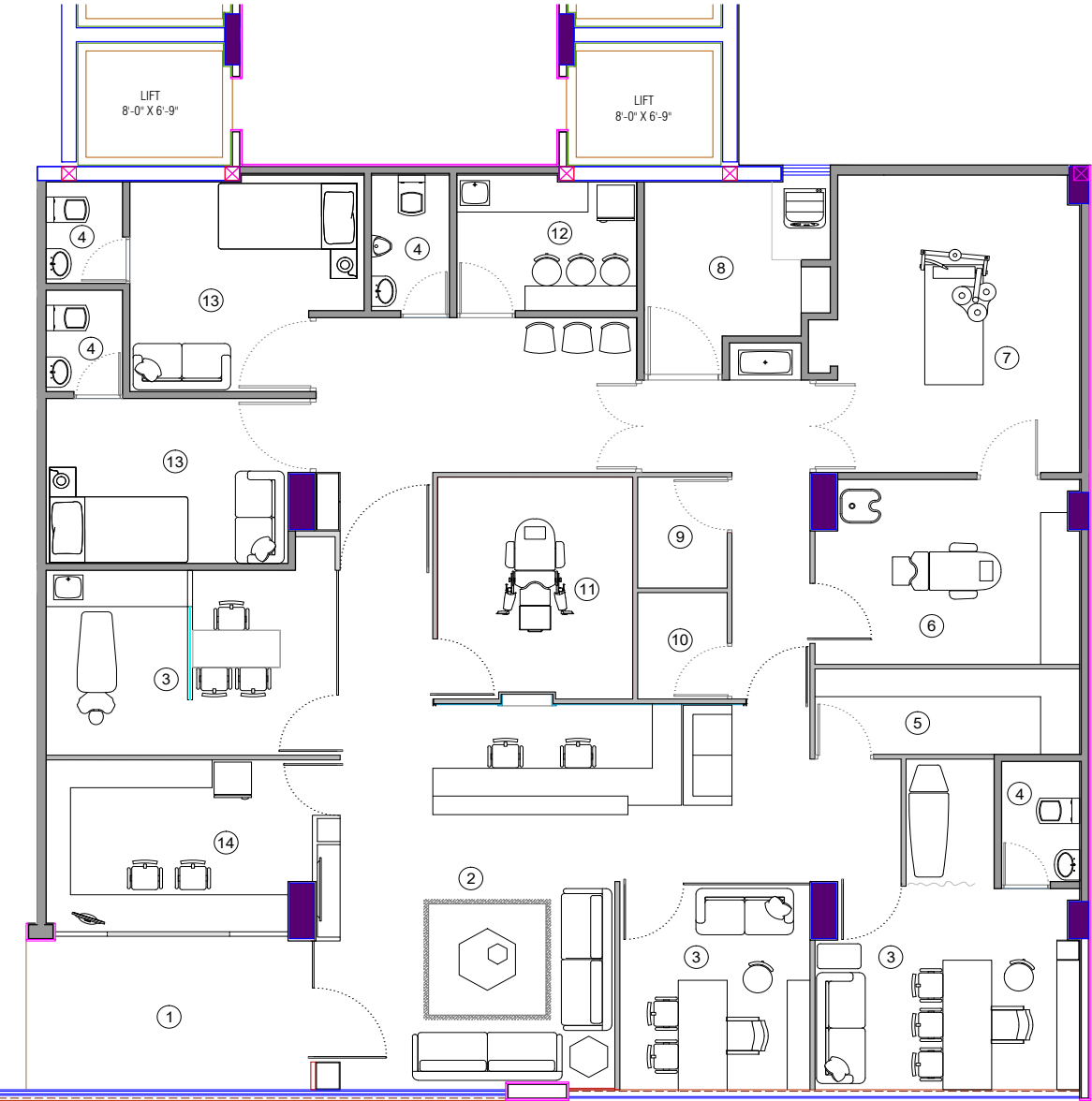
The visitors are welcomed by the soothing simple green wall behind the large piece of Italian marble that serves as the reception desk. The backdrop of this area is also completed in Italian marble. The simple hues of the waiting area with the teal colour sofa compliment the green wall. Other attractions are the contrast matt finished vitrified flooring and wooden reflected ceiling throughout the spaces. The concealed lights guide you further towards the doctor's cabin with the vibrant-coloured leather-finished furniture. Cabins are separated by glass and wood panelling to maintain the transparency wherever required. Apart from these features, the different use of lights according to varying functional spaces becomes an integral part while designing a clinic.



The highlight of the reception area is the Italian marble backdrop

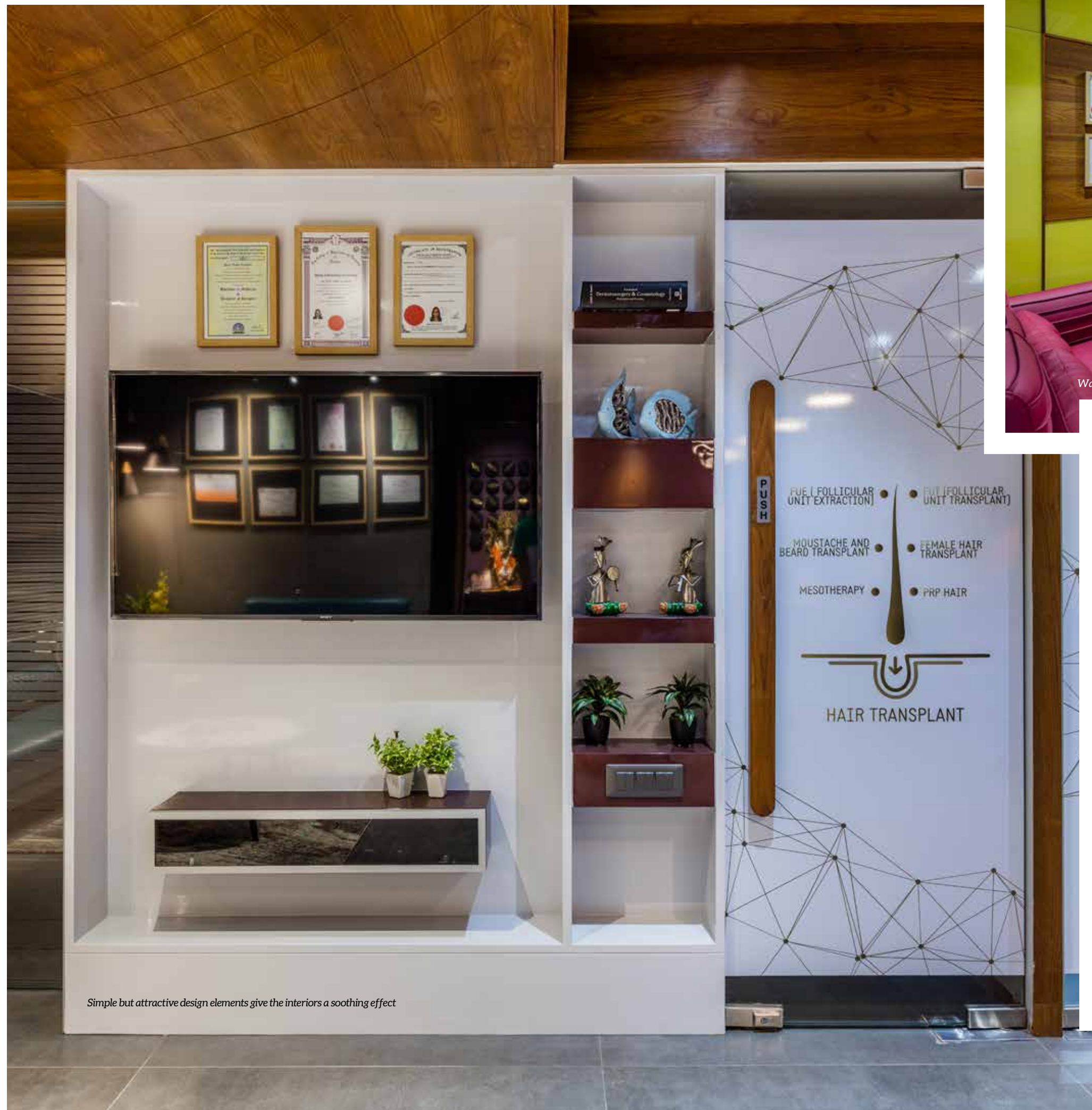


Artificial simple green wall at the reception

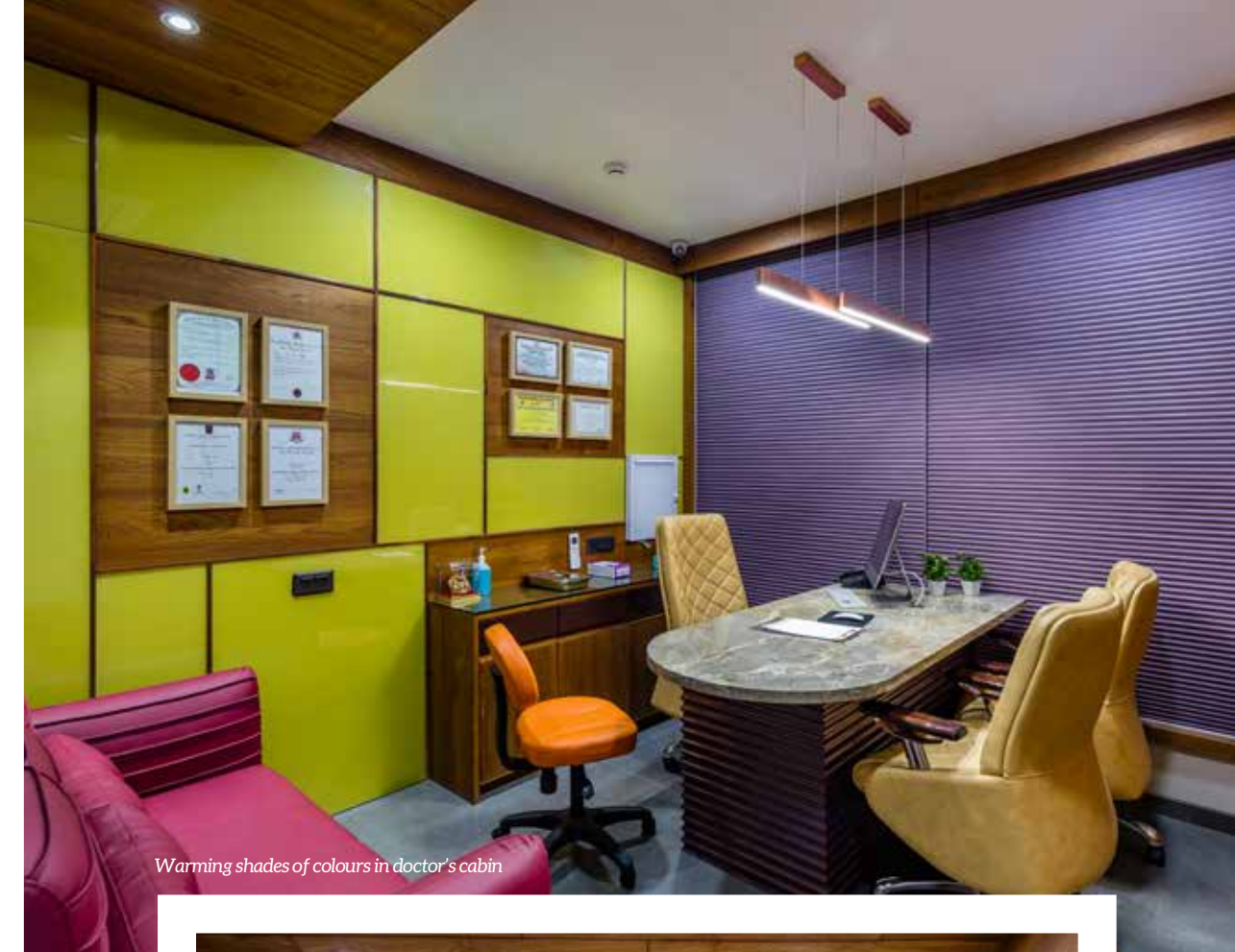


- (1) ENTRANCE
- (2) RECEPTION & WAITING
- (3) DOCTOR'S CABIN
- (4) TOILET
- (5) STORE
- (6) HAIR TRANSPLANT ROOM
- (7) O.T. ROOM
- (8) C.S.S.D.
- (9) CHANGING ROOM
- (10) SERVER ROOM
- (11) LASER ROOM
- (12) PANTRY
- (13) PATIENT ROOM
- (14) PHARMACY





Simple but attractive design elements give the interiors a soothing effect



Warming shades of colours in doctor's cabin



Wooden reflected ceiling



Consulting rooms are set in contrasting vibrant hues

Procedure room



Glass and wood panelling separate cabins and maintain the transparency



Use of white walls and matt finish vitrified flooring gives the room a soft look



Procedure room in simple colours



HARSH PATEL & KEJUL PATEL

## INCREATION ASSOCIATES

The firm was started as a very modest interior design firm which gradually with time and every project accomplished, our evolved from an exclusive interior design firm to a civil and architectural planning firm and attained the position as one of the respectable and admired firms of Ahmadabad. Since 2012, Increation Associates has made its presence felt through innovative, minimalistic and timeless designs. The principal designers and founders of the firm, Kejul Patel & Harsh Patel, we strove for knowledge and exposure which boarded us on a path of self-learning and grasp experience for resources around. Intense travelling, study and seminars helped us create a boutique identity of our practice.

The designers have perfectly blended elements from the cosmetic treatments into the designs. Meanwhile, the cabins are set in contrasting vibrant hues that stand out. The spaces dedicated for medical procedures are designed in accordance with the health care guidelines and have been kept minimal. Considering all requirements, the overall layout represents a clear circulation and a well-designed spatial organization with colourful interiors that helps ease the treatment process. Overall the space provides a sense of comfort, positivity, varied colour and enough private space. 🏡



NICU and PICU rooms have epoxy flooring specifically done to maintain the hygiene and cleanliness

# Juxtaposed & Vivid

Inscape Insider Tejas Shah

PROJECT INFO	
PROJECT NAME	: DEV CHILDREN'S HOSPITAL
LOCATION	: VADODARA, GUJARAT
DESIGN PRACTICE	: USINE STUDIO
PRINCIPAL ARCHITECTS	: YATIN KAVAIYA & JITEN TOSAR
DESIGN TEAM	: AR. HIRAL SOLANKI & YESHA SHAH
PMC	: NIMESH PANCHAL
PLOT AREA	: 2620 SQ. FT.
GROSS BUILT AREA	: 7800 SQ. FT.

“

*Designing a hospital for children should reflect their mood, something that lightens every child, bringing a sense of playfulness and enjoyment*

The art and science of designing a hospital is a complicated affair. Once the crux of the concept is cracked, the next challenge is to accommodate a myriad of services and facilities on site. Designing a hospital for children should reflect their mood on their mood, something that lightens every child, bringing a sense of playfulness and enjoyment. This was achieved by the design team at Usine Studio in Vadodara, Gujarat using colours as a symbol of purity, authenticity and cleanliness.



Neat design, adequate lighting, and ventilation in general female ward

Dev Children's Hospital is an enthralling approach to a healing and caretaking abode. Kids are not at ease when it comes to medical procedures like injections or minor wounds which they find tedious and intimidating. Hence, extra effort is needed while designing paediatric healthcare facilities as it should help kids feel accepted and pleasant.

The designers arrived at a well-ordered design, ensuring adequate lighting, and allowing proper ventilation that suffice the significance of the space. They have achieved the same freshness across

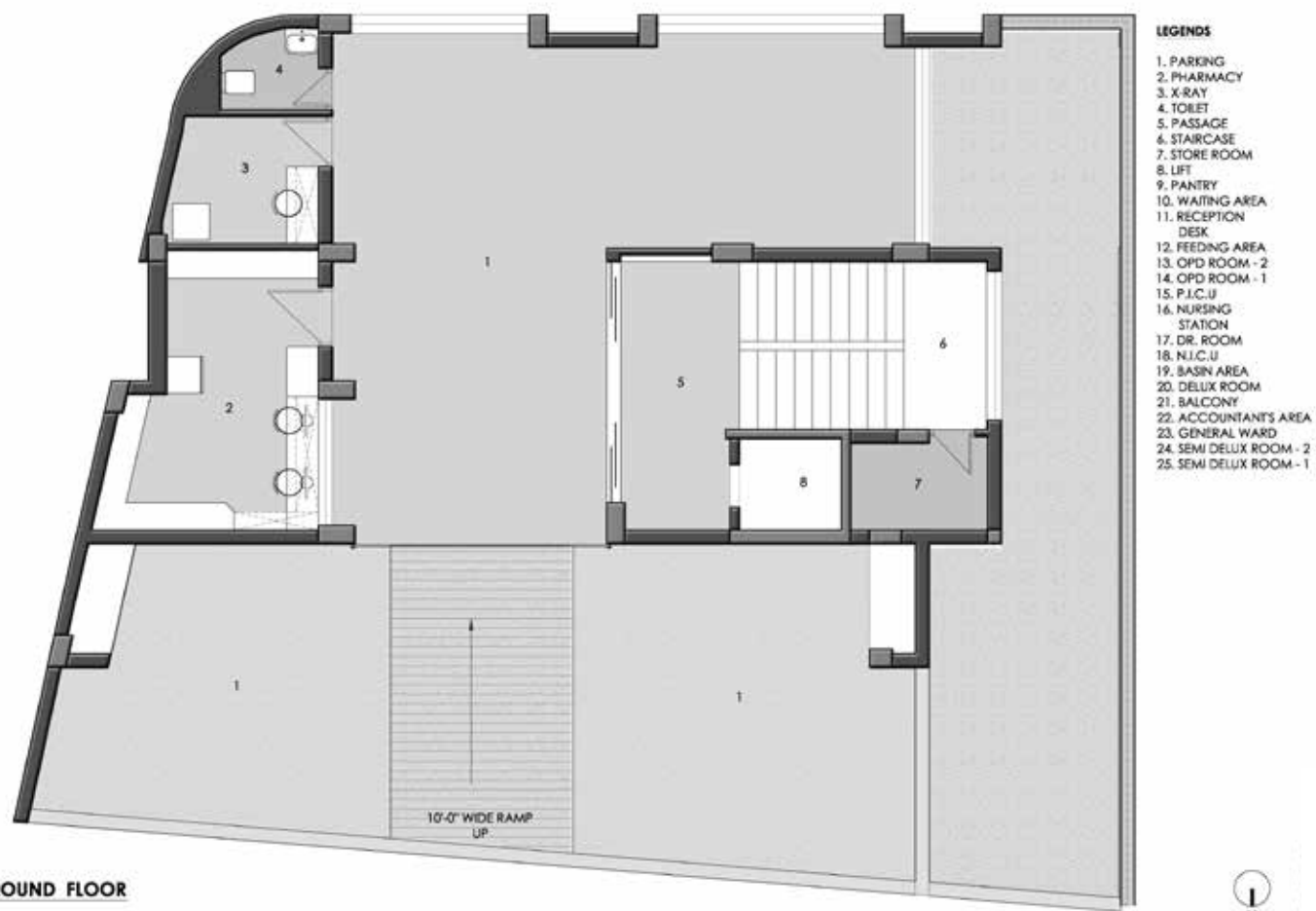
all its spaces that seep into similar material palette and design concept in general wards and private wards. They have incorporated materials that are easy to maintain and as per the standards specified. The use of inviting and welcoming graphics was indeed a conceptual thought that makes the space more friendly and creative for children. Alcove seating spaces with pastel-shaded background and furniture, well-composed graphic wall and bold geometric light pattern in-ceiling reflects their design approach, to reception and waiting area providing a comforting environment.

The transition between floors is through a staircase cabin, envisaged with interestingly ornated cartoon characters across all levels transporting the users into a different zone. The characters secure their place in the tinted concrete making the transition more interactive and amusing. For easy maintenance of hygiene and cleanliness, the folded plate stairs are surfaced with the plain vitrified tiles and steel railing.

Pastel coloured shades, vivid graphical representations, and geometric lines juxtaposed in an ordered fashion creates one of a kind curative space in the hospital.



The cartoon characters secure their place in the tinted concrete making the transition between floors interactive and amusing



**GROUND FLOOR**



**FIRST FLOOR**





The recessed windows bring in indirect light creating niches for the seating and the display racks



JITEN TOSAR



YATIN KAVAIYA

## USINE STUDIO

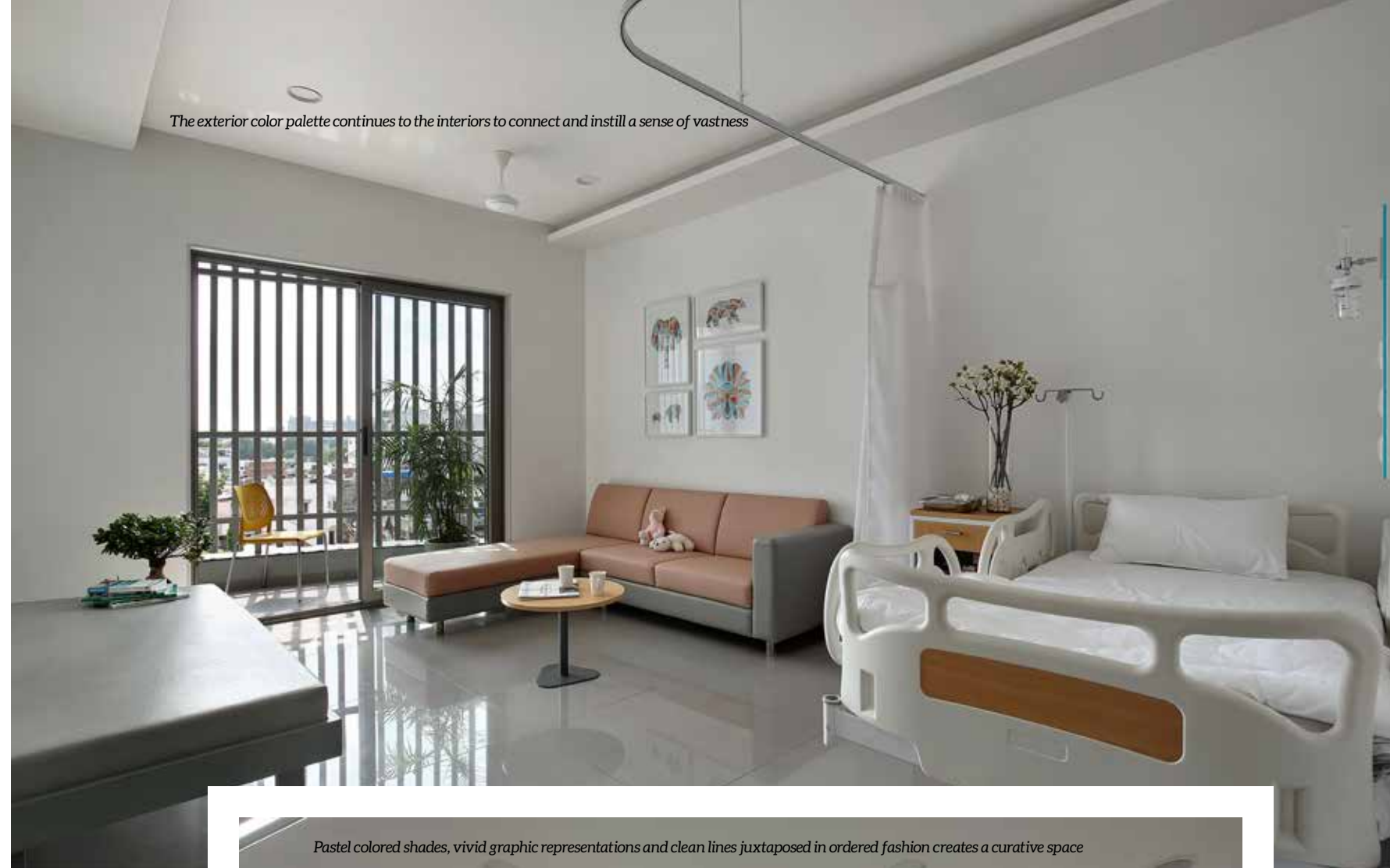
UsineStudio is a boutique design firm based in Vadodara founded by Yatin Kavaia and Jiten Tosar. Upon graduating they immediately began garnering experience by working constantly as senior designers under the aegis of a well-established architect in the city. They started their own firm, a creative workhouse in 2010 to tap into the growing market. The studio is dedicated to make contemporary and elegant designs that are functional with timeless details, also fuses luxe to organic accents. They assume that the client's requirements should be fulfilled in the best possible and most creative way by reflecting occupant's life-style.

The team believes in performing by working in brevity with percipience, but also realise that the spaces should not only look good, but work with functionality and context.

The ideology of reflecting the interior pastel colour pallet onto the façade keeps the whole building monotonous inside out, adding along with a striking element to the design.

This project confidently justifies the enthusiasm of its user-group, fulfilling the functional requirements of a healing facility with such multitudes. The ultimate output that gets manifested here is a sober, vivid and tranquillizing space for the patients to heal themselves.

Light and bright colours create excitement among the children, invoking an artistic painted ambience. Numerous colours come about with a set of psychological properties that aid in getting better and feeling better. Yellow, with its antibacterial properties, acts as a body cleanser; while green helps create balance and harmony within the body. Therefore one can return relatively the lost comfort to a child by employing these colours in environmental graphic design in medical spaces and reduce stress and fear caused by the disease and therapeutic environments.



THIRD / FORTH FLOOR



Comfortable Waiting Area

# Crafted & Sophisticated

Inscape Insider Maulik Patel, Inclined Studio

PROJECT INFO	
NAME	: INDOVASC HOSPITAL
LOCATION	: AHMEDABAD, GUJARAT
DESIGN PRACTICE	: SHAILAHA HARISH DESIGN STUDIO
CLIENT	: DR.SRUJAL SHAH (MS, MCH) VASCULAR & ENDOVASCULAR SURGEON
AREA	: 8133 SQ.FT.

“

An outstanding experience created by leveraging the physical qualities of an environment to project a distinctive identity that embodies and reflects the aspirational qualities of Indovasc as a brand

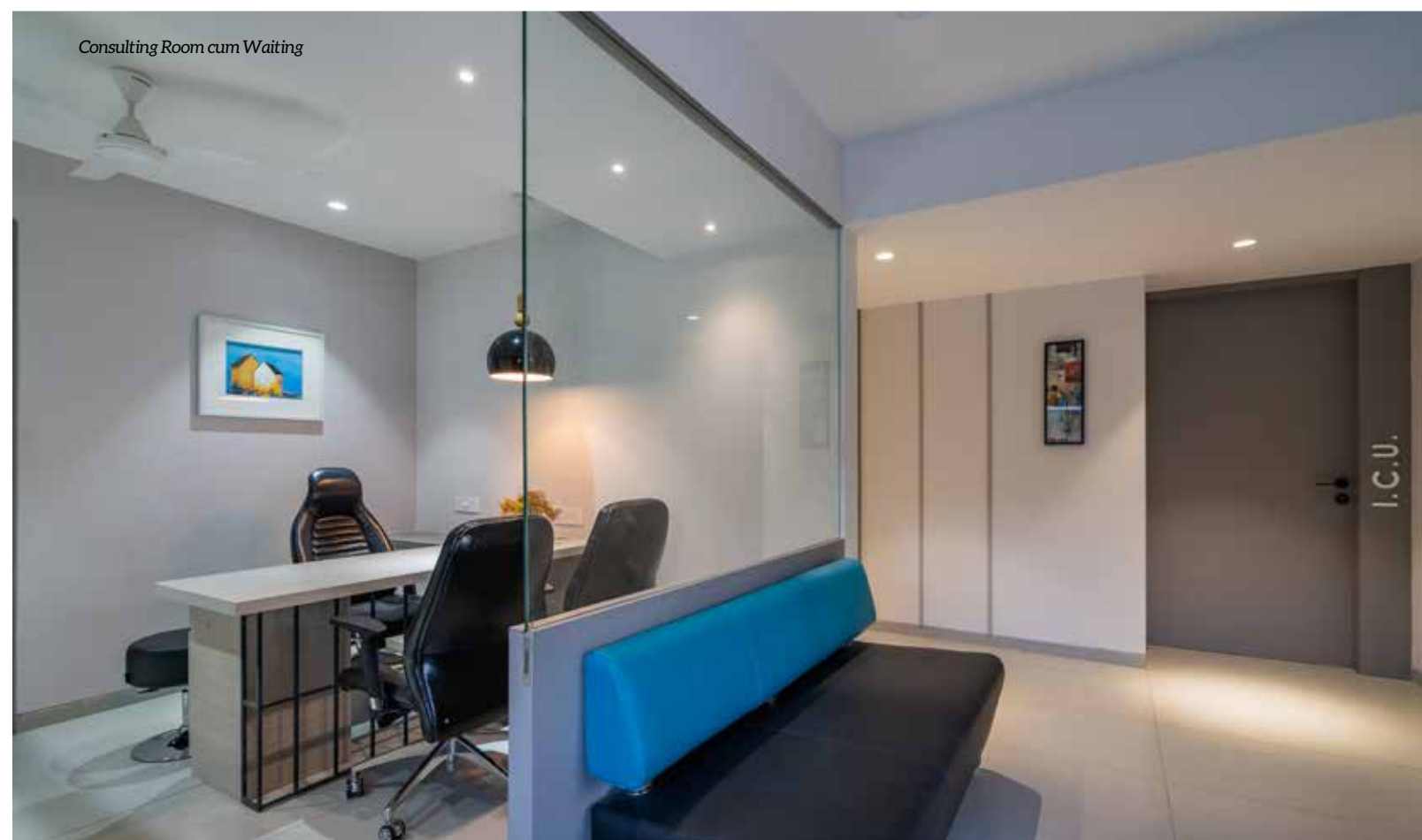
Healthcare spaces are being redefined in the current times. We are seeking comfortable environments to rest and heal. One such design was embarked by Shailja Harish Design Studio in Ahmedabad. They have transformed the healthcare space into a sophisticated healing environment.



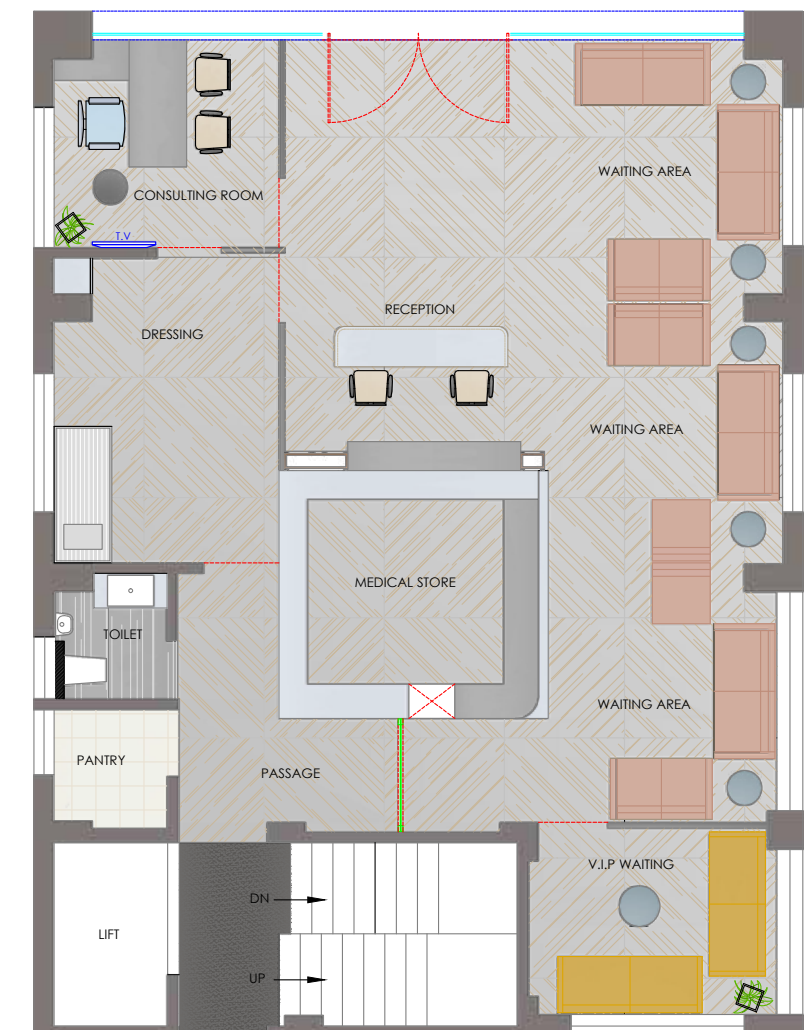
Well ventilated rooms

Indovasc is Ahmedabad's leading vascular surgery hospital designed on the concept of imbuing health promoting qualities into health care facilities. An outstanding experience created by leveraging the physical qualities of an environment to project a distinctive identity that embodies and reflects the aspirational qualities of Indovasc as a brand. It is a place that visually communicates their mission, culture and values while spatially promoting, supporting and enabling the behaviors and actions associated with their broader goals.

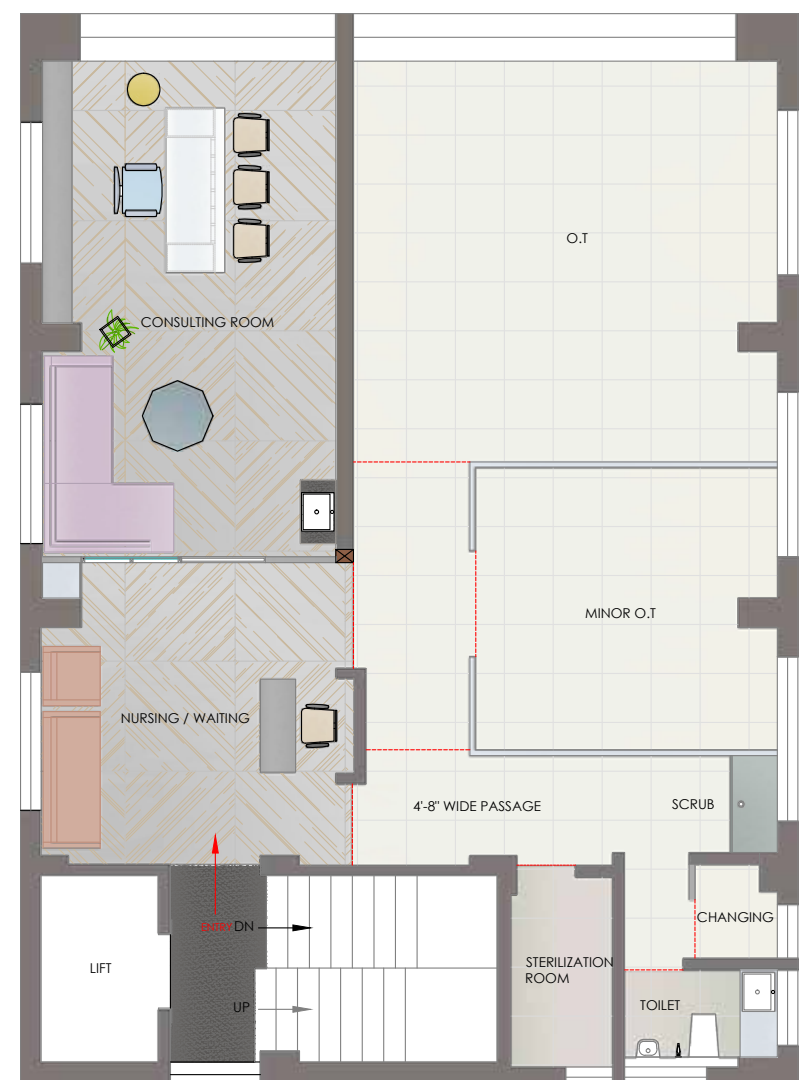
Given the expanding health care industry, quality of patient care is directly influenced by the quality of interiors in health care setting. Indovasc Hospital is broadly conceived involving two aspects, first being understanding the need for quality care in medical environment and second is the business of health care.



Consulting Room cum Waiting



GROUND FLOOR



FIRST FLOOR



SECOND FLOOR



THIRD FLOOR

Sophisticated environments can engage patients into a conscious process of inner healing and mental peace. The design team's big idea was to create more comfortable and home-like space which created a sense of hope and confidence among all the patients alike, visitors, staff and the doctors as well.

In order to achieve the ingenuity and detail each space were applied with soft colours on walls and vibrant colours in furniture and wall paintings to give more natural look to rooms, also the use of artificial plants mimicked the sense of living with nature and prolific use of windows provide natural sunlight and ventilation.

The waiting room and consultation area are covered by natural Italian marble to give a luxe and lavish appearance. The focus resided on invoking natural feel and ambience in every nook and corner of the hospital, from its lighting to flooring, the play of colours and temperature with an aim of enhancing patient's recovery experience.



Neutral coloured spaces



Multi-facility Deluxe Room

Staircase leading to the floors above



Doctor's Desk

Transcendence was achieved by the physical spaces that has the potential to be therapeutic, while the interior design of Indovasc radiate positive energy thus reducing stress and inducing a calm atmosphere.

Ocean blue marble floor and elegant lighting arrangements gave a decorated charm that even transitioned to the waiting area with luxurious and comfortable sofas arranged in a way that benefits patients to sit with their family and relatives.

The reception cum waiting area is served with a vertical garden and a printed stretch of linear light in the ceiling illuminates a lively and relaxing environment. The consulting room has a soft interior to transform patient's experience and intuitive powerful words on the wall encourage them to heal. Adorable spaces provided in the suit rooms help patients to de stress and feel light in its ambience.

The Indovasc is truly an elemental hospital that serves people and care about everything they care about. Its made for the kind-hearted, and it does resonate in its interior design and forms. 🏡



Corridor with ambient lighting



HARISH PATEL & SHAILJA PATEL

## SHAILJA HARISH DESIGN STUDIO

Founded in 2001, with the context of "Elevating Peoples Life Style" openness and empathy is always at the heart of what they design at Shailja Harish Design Studio. It is an award winning firm, extraordinarily effective at listening to their client's requirements and readily accessible throughout the work. They have an integrated design team providing the best designs, where they cherish fulfilment and happiness. The team believes that the best interior designs can only be created by passion and commitment.

The firm driven by focus on the pursuit of excellent design standards achieving total satisfaction

Through their extensive knowledge of interior design trends, they craft unique solutions with harmonious spaces. They keep a high level of integrity and effectiveness in every project.



# A Place to Heal

Ar. Jayakrishnan Ranjit    Rajesh Vora

## PROJECT INFO

PROJECT NAME	: SYMBIOSIS HOSPITAL & RESEARCH CENTRE
LOCATION	: LAVALE, PUNE
ARCHITECTS	: IM KADRI ARCHITECTS
PRINCIPAL ARCHITECT	: IM KADRI
STRUCTURAL (PHASE I)	: THE AXIS STRUCTURAL CONSULTANTS, PUNE
STRUCTURAL (PHASE II)	: JW CONSULTANTS LLP, PUNE
CLIENT	: SYMBIOSIS SOCIETY PUNE
MECHANICAL	: RADIANT CONSULTING ENGINEERS, NAVI MUMBAI
PROJECT YEAR	: 2019
AREA	: 4,50,000 SQ.FT.

“

*The overall design of the hospital is both welcoming and peaceful. It provides a sense of grandeur along with a structure that expresses solidarity, resonates care and shelter for the patients in distress*

On a flexuous terrain amidst sprawling 40-acre campus humbly sits Pune's renowned education institute Symbiosis, SUHRC. It is envisaged as a Multi-Specialty Hospital that provides excellent health care facilities and a state of the art centre, enhancing skill development. A clear concept catering to the needs of all the stakeholders, the hospital caters to the nearby population of Pune and its neighbouring areas. All the while providing Tele-Medicine services to ensure outreach services to peripheral, far-flung and access-compromised settlements. In today's context, currently, the hospital is being used for government welfare as COVID 19 hospital.

Faceted brick box facade



- 01. Symbiosis University Hospital and Research Centre
- 02. Skill Centre Cafeteria
- 03. Internal Courtyard
- 04. Open to sky Cafeteria
- 05. 12M Wide Hospital Approach Road
- 06. Hospital Dropoff Area
- 07. 12M Wide Skill Centre Approach Road
- 08. Skill Centre Dropoff Area
- 09. Service Entry To Basement Floor
- 10. Service Entry To Lowerground Floor
- 11. 18M Wide Road for Future Buildings/Residential Block
- 12. Towards Residential Block
- 13. Phase 02 Buildings



Entrance Canopy

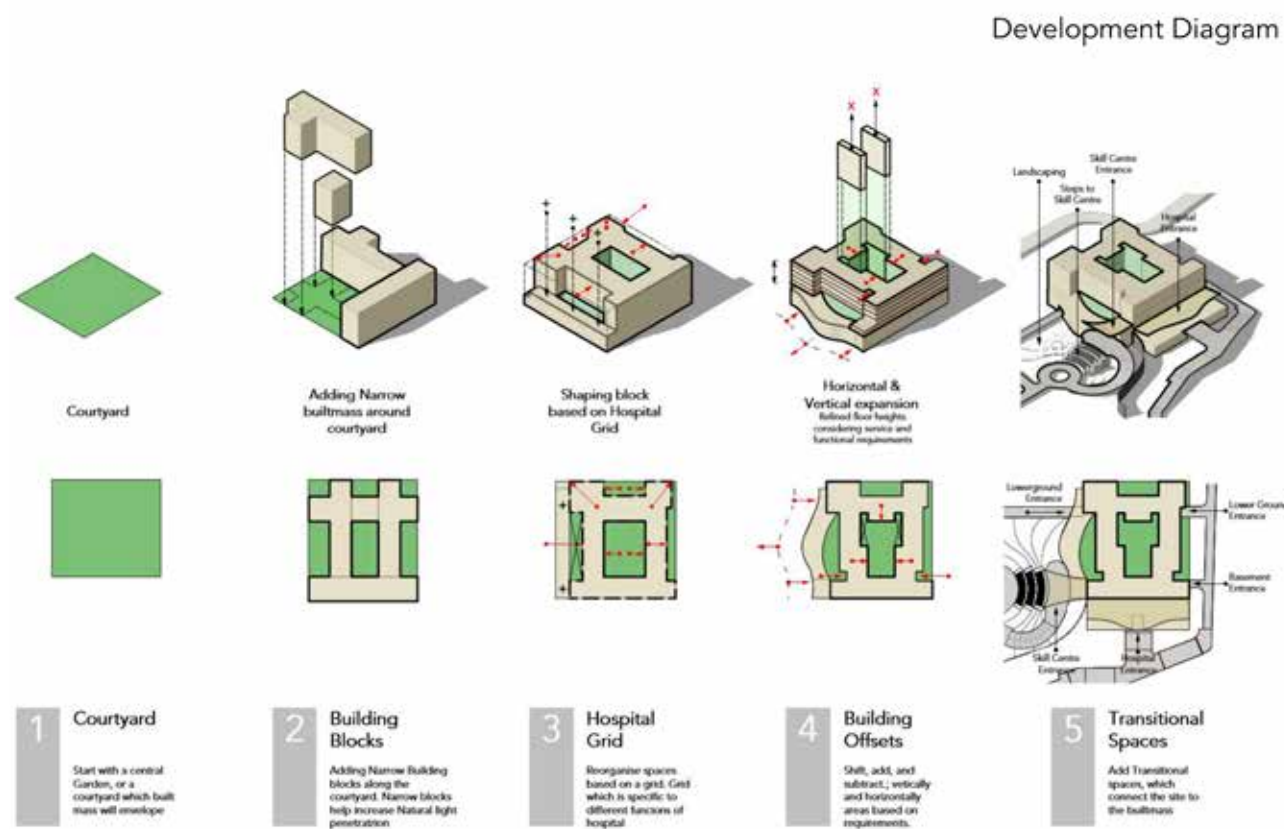
The building is strategically positioned on a slope to minimize the cut-and-fill of the hill site. A robust design curve along the contours of the land evolving into the façade of the project. The building imbibes the client brief of 'grandeur' being a key element. Two significant symbolic entrances have been designed, distinct in approach and of unique identities for the hospital and the academic block. The entry to the hospital is welcoming and peaceful. It also provides a sense of grandeur along with a structure that expresses solidarity, resonating care, and shelter for the patients in distress. A large open-to-sky courtyard separates the centre from the hospital. Separate entrances of two blocks, making them seem like two completely different entities, providing the students with different access and a space to relax and learn.

The skill centre entrance draws inspiration from the stainless-steel surgical instruments, a mammoth silver steel bird,

with wings wide, welcomes the visitor into the building. Standing bold on steel pipes, a futuristic roof scales high under the beaming bright sun in a contemporary symbolic echo. The transition between light and shade has been achieved with smaller skylights in the roof, and an expansive opening towards the upward bending tip. The surface above is a terrace garden, connecting with the patients as a biophilic space, enhancing the healing process. Two large courtyards in the building become buffer zones that help in healing patients, invoking ample light, and overlooked by wardrooms and the Out-Patient Department. The OPD is devoid of air-conditioning but allows for fresh, natural air ventilating its interiors. All departments and spaces of the hospital are designed to bring in daylight and natural ventilation through courtyards. A three-metre wide corridor in all levels abuts the central yard, which lets in natural light and ventilation, thereby reducing the AC load and consumption.



Nurse's Station



The courtyards act as spaces for healing and congregation while reducing cross-infections. The terrace gardens are landscaped with flowering trees and plants, creating a soothing effect for the patients and caretakers. The main central court transforms the space around it with an abundance of plants and small trees. It brings in daylight but also makes the space aesthetically pleasing, soothing to the eye by creating a calm oasis.

Functionally, the building comprises of four sections; three belongs to the hospital and the last one being the skill centre. Every part is a functionally-driven formal design. The three blocks, such as the general, procedure, and multi-speciality, encompasses functional ease and unfettered criss-cross movement.

Around 900 beds in the general hospital block, 600 beds for free patients and procedures are all taken care and treated by the medical college students. This block has been connected to the procedure block, with services running along one side of the corridor. At the same time, the departments are situated on the other, allowing for ease of access without causing any disturbances. Further, the procedure block is well segregated from the ward to ensure privacy to every patient, while being shared as a standard procedure block by paid and

free patients alike. This block is equipped with the latest medical technology being robotic Operation Theatres and surgical operations.

Across five levels, the hospital is developed into departments such as the OPD, casualty, radiology, MHC, etc. with easy ground access. Those that are frequented by more patients every day are planned at the ground level. The first-floor comprises of general, twin, and single bed wards, most of which overlook the garden space. The critical areas such as OT's, Pre-Op and Post Op, ICU's Cath, etc. are on the 2nd floor, making it a sterile zone. And thus segregated from other areas of the hospital.

Post-tensioned slabs are used to achieve flexibility, minimum beams, and larger spans that facilitate different room sizes and arrangements with the easy routing of ducts. Naturally compressed, sundried earthen bricks produced on-site, have been used for façade and masonry work. Smaller details have also been considered to ensure a calm and serene atmosphere. This promotes healing while encouraging research and creating spaces that are easy to use and maintenance-free. Colour coding has helped in enabling for easy identification and assortment of spaces. Critical areas such as ICU's are endowed with light colours in soothing shades to reduce anxiety.





Landscaped Courtyard



Interior Room



Interior Corridor

With careful and strategic planning the building attempts to make gestures that are grand, yet local and responsive with attention to details such as the brick-art and the exposed concrete.

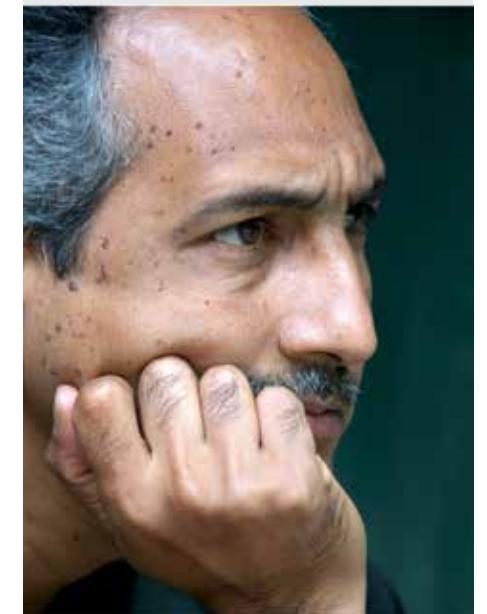
Sitting comfortably on the fringe of the hill, the inner courtyards seem like a continuation of the terrain, where the built form amalgamates with the site. From brick-art details to exposed concrete, the hospital creates a homely space for the patients. Allowing nature to be a part of the hospital and comforting the patients, the hospital creates an enriching space for recovery and rejuvenation.

### Ground Floor Plan

- 01. Hospital Entrance Lobby & Reception
- 01a. Hospital Drop-off
- 02. Emergency Dept.
- 02a. Emergency Drop-off
- 03. Skill Centre Entrance Lobby
- 03a. Skill Centre Drop-off
- 04. Skill Centre Cafeteria
- 05. Radiology Dept.
- 06. Out Patient Dept.
- 07. Pharmacy & Stores
- 08. Kitchen & Stores
- 09. Hospital Cafeteria
- 10. Hospital Outdoor Cafeteria
- 11. Internal Landscape Courtyard 01
- 12. Landscape Courtyard 02
- 13. Towards Hospital Drop off- Bridge Connection
- 14. Service Entry towards Lower Ground Floor
- 15. Service Entry towards Basement Floor



Reception Desk



RAHUL KADRI

### I M KADRI ARCHITECTS

Founded in 1957, IMK Architects is an architecture and urban design practice headquartered in Mumbai with another office in Bengaluru. It is led by the father-son duo of I. M. Kadri and Rahul Kadri who are supported by a 35-strong multidisciplinary team of architects, designers, planners, engineers and visualisation artists. The practice's early journey is intrinsically tied to that of independent India, and more specifically, to that of the country's financial capital of Mumbai, its diverse work a reflection of changing times and imaginations as a young nation and its first metropolis navigated questions of tradition and modernity and business and politics on its way to a self-sufficient and economically-secure future. What remained constant, however, is IMK Architects' focus on exploring the potential of architecture within the paradigms of culture and civilisation to serve the needs and aspirations of the communities it serves. Social consciousness, sustainability, and robust designs have been the cornerstones of the practice. Its unique, collaborative SCRUM design process, which involves intense workshops with all project stakeholders to question briefs and prioritise requirements, ensures the effective and efficient delivery of holistic design solutions that don't just meet initial expectations but transcend them. Today, after over six decades of practice, IMK Architects draws from this rich legacy and cutting-edge research and innovation to create architecture that responds to time, place, and most importantly, people – vibrant, dynamic, healthy, socially-inclusive and ecologically-sensitive spaces where lives flourish and activities thrive.



# Curating Change

 Inscape Insider  Manoj Sudhakaran

## PROJECT INFO

PROJECT NAME : DHARMAPURIHEALTH CENTRE  
ARCHITECTS : FLYING ELEPHANT STUDIO  
LOCATION : DHARMAPURI, TAMIL NADU  
YEAR : 2011  
AREA : 4000 SQFT  
TEAM : RAJESHRENGANATHAN, IYPE CHACKO, NEHA GUPTA, KIRAN CHANDRA  
STRUCTURES : MANJUNATH& CO  
MEP : YASH CONSULTANTS  
CONTRACTOR : JKUMAR CONSTRUCTIONS, ACHUP ENTERPRISES

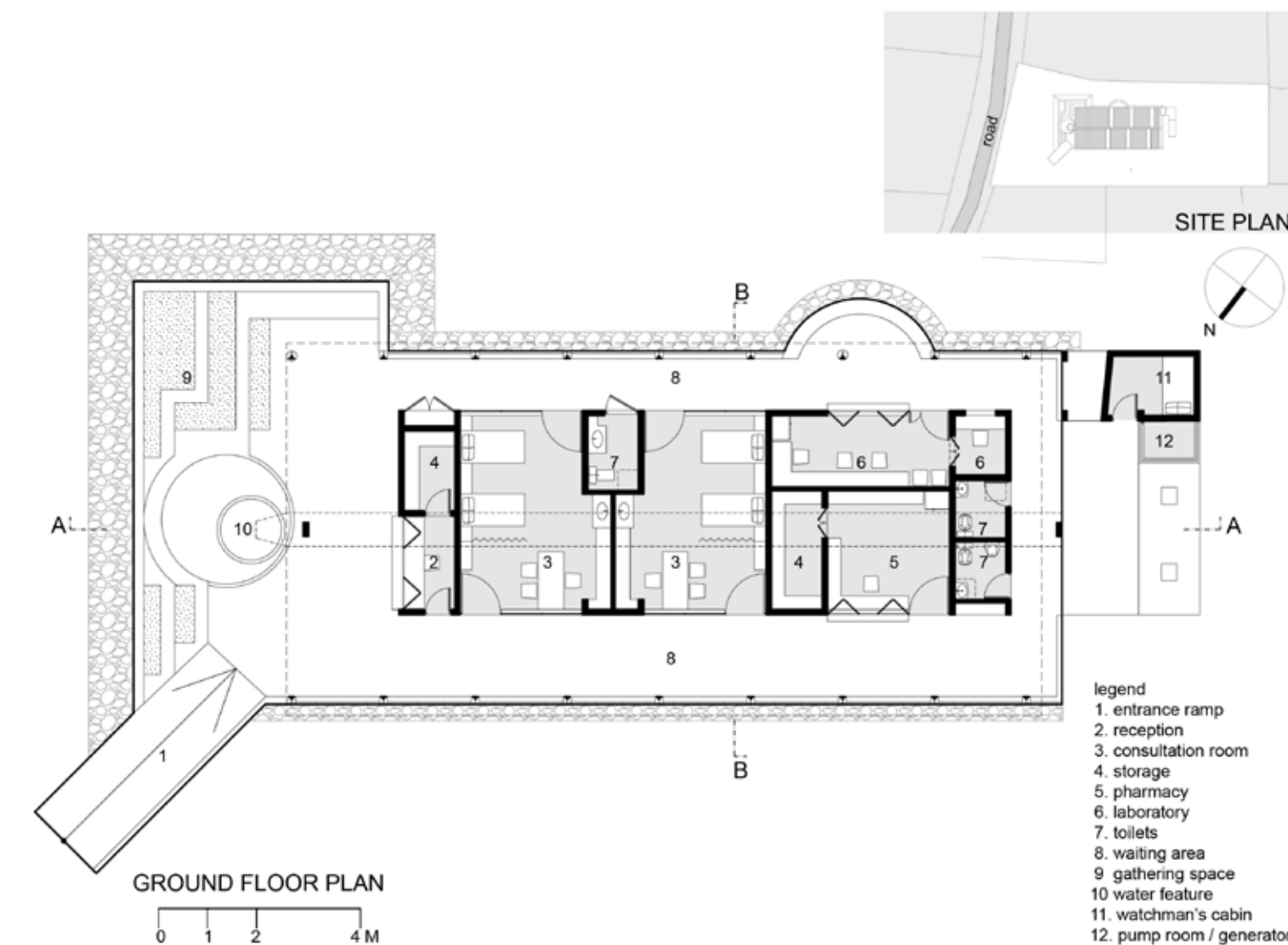
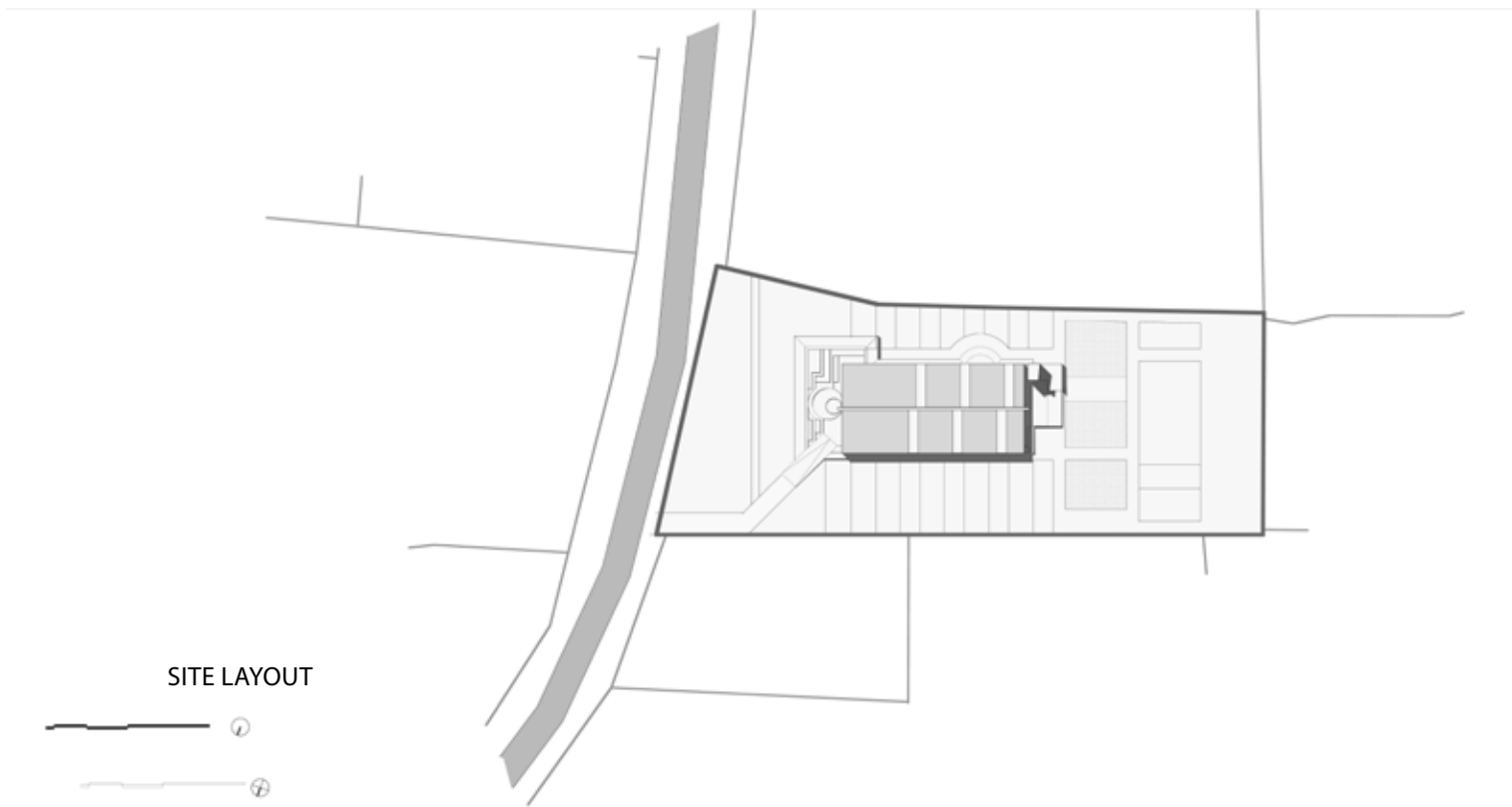
“

*A competent healthcenter that would provide timely medical intervention thereby avoiding unnecessary expenditure currently incurred in travel to distant urban hospitals*

Healthcare is one of the key fundamental institutions required for ensuring a community's well-being. In cities and towns where you can locate such a facility at close proximity, the boon of its existence is seldom appreciated; however, for the rural folks, this experience is often tedious, tiring and diabolical. In light of this situation, the Mahalir Aran Trust in Tamil Nadu approached the team of Flying Elephant Studio with a concept that was primal – a competent healthcenter that would provide timely medical intervention thereby avoiding unnecessary expenditure currently incurred in travel to distant urban hospitals.



View of the building envelope and clinic within



With a requirement that predominantly relied on the efficiency and ease of functionality, any innovative design intervention should ultimately be sensitive to the shoestring budget and programme context. Keeping this in mind, the design proposed by the team was nothing short of brilliant.

The design consisted of two basic parts - a small building that caters to the medical requirements as per the project brief and an outer envelope that complemented the spatial requirements - an approach laid out from a 'building within a building' notion. The more expensive conventional core structure, built to higher medical specifications, accomplishes a weather-tight, sterile, secure and easy-to-maintain clinic building; while the innovative low-cost outer skin utilizes

a material palette predisposed to available building skills in grass thatch and random rubble masonry. The inherent programmatic split, of core clinic functions and waiting areas, are conceived as a linear structure for better day-lighting and cross ventilation. The ingenious cost-saving strategies permitted provision of an additional non-programmatic space within the available budget: a stepped amphitheater-like extension at the entrance, that allows for small gatherings related to public health awareness initiatives. This further alleviated the role of the healthcare center as a prominent public space and helped in inducing community participation. An additional outdoor landscape layer of varied cultivated terraces, medicinal plant patches and orchards further helps mediate with the environment.



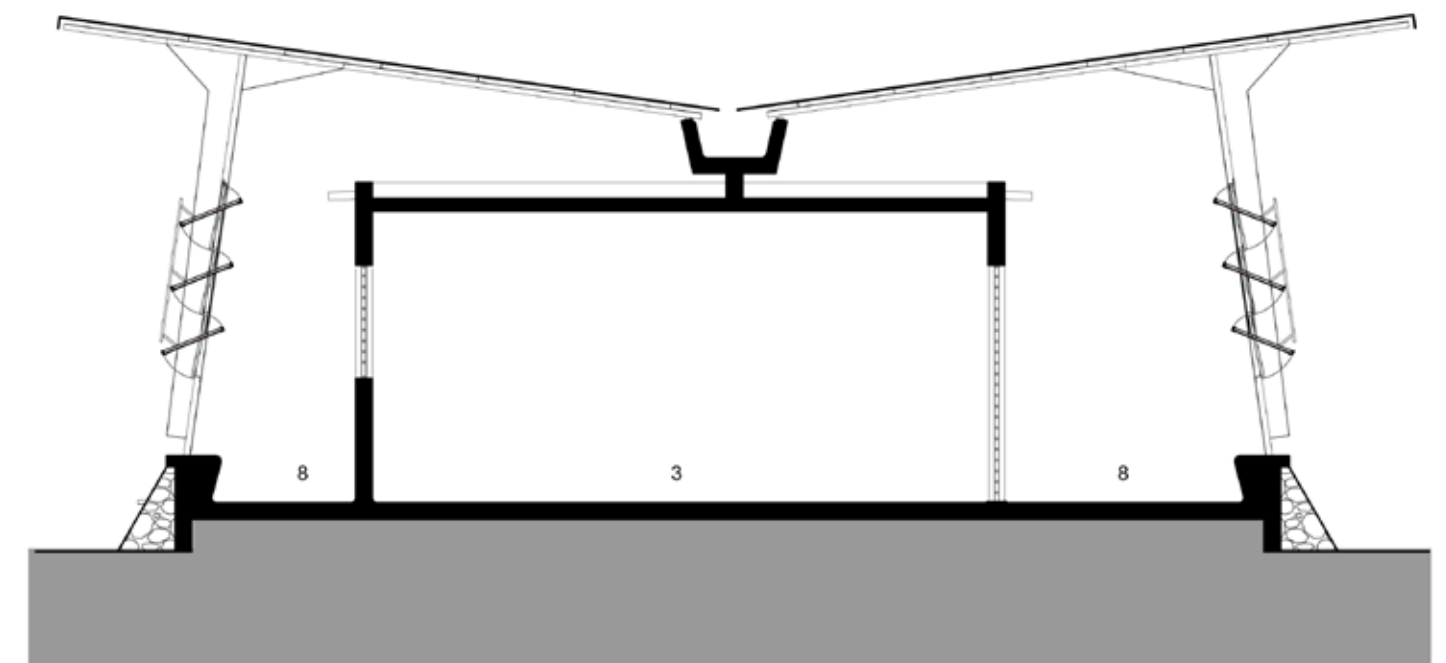


Amphitheater upon entry used for social gatherings

The depth of design detailing is also interesting to note. The outer envelope functions as a shaded climatic buffer and enhances the comfort levels within. The screens are made using 'vetiver' grass thatch that keeps the interiors cool through evaporative cooling, while filtering ambient dust that is quite prevalent in such hot and dry regions. These panels are also operable enabling control over the degree of climatic protection required during the varying weather conditions.

The roof profile of the outer envelope is inverted upwards, contrary to the traditional sloping pattern, devised to inculcate efficient rainwater harvesting that can subsequently used for storage or ground water recharge as and when required. The drain off is channeled through a central concrete gutter beam that empties out onto a collection pond upfront. This mechanism has multiple benefits – it optimizes rainwater collection, it eliminates the need for waterproofing the inner structure and the interstitial space serves to house service units and piping which are easy to access and maintain.

Front elevation of the facility



SECTION B

0 1 2 4 M

View of the facility upon entry





The 'vetiver' grass thatch shutter design for the facade louvers



The shading system incorporated

The rubble masonry plinth wall that resonates with the local built character



Verandah functioning as a waiting area



The unique portal type frames combine slender 65x65mm double steel angle sections that sandwich two structurally profiled 12mm thick fly-ash cement fiberboards. The resultant structural frame utilizes the strength and characteristics of each material to produce optimal structural efficiency and stiffness while consuming a minimal quantity of expensive steel. The portal frame stays supported on a plinth wall that is built of small stone boulders salvaged from site excavation. The natural earthy texture augments the overall aesthetic appeal while serving the purpose of a perfect visual foil that is maintenance minimal for a surface that is prone to dust and earth splash. On the other hand it echoes the typical water retaining terrace edge bund walls of the surrounding agricultural landscape, anchoring the building to its locale.

By employing a 'hybrid' construction team that consisted of a core group of skilled craftsmen and a second group of local workers, a high quality of workmanship was achieved while transferring expertise to local agencies. At a meagre and completely justified cost of 800 rupees per sqft, the project was completed in approximately 65% of the construction cost incurred in a comparable conventional building.

As a whole, the project takes a step forward in the course of rural empowerment. As a clinic, as a public space and as a design intervention, the building has opened the eyes of the community – a pebble that shall bring about ripples of change.



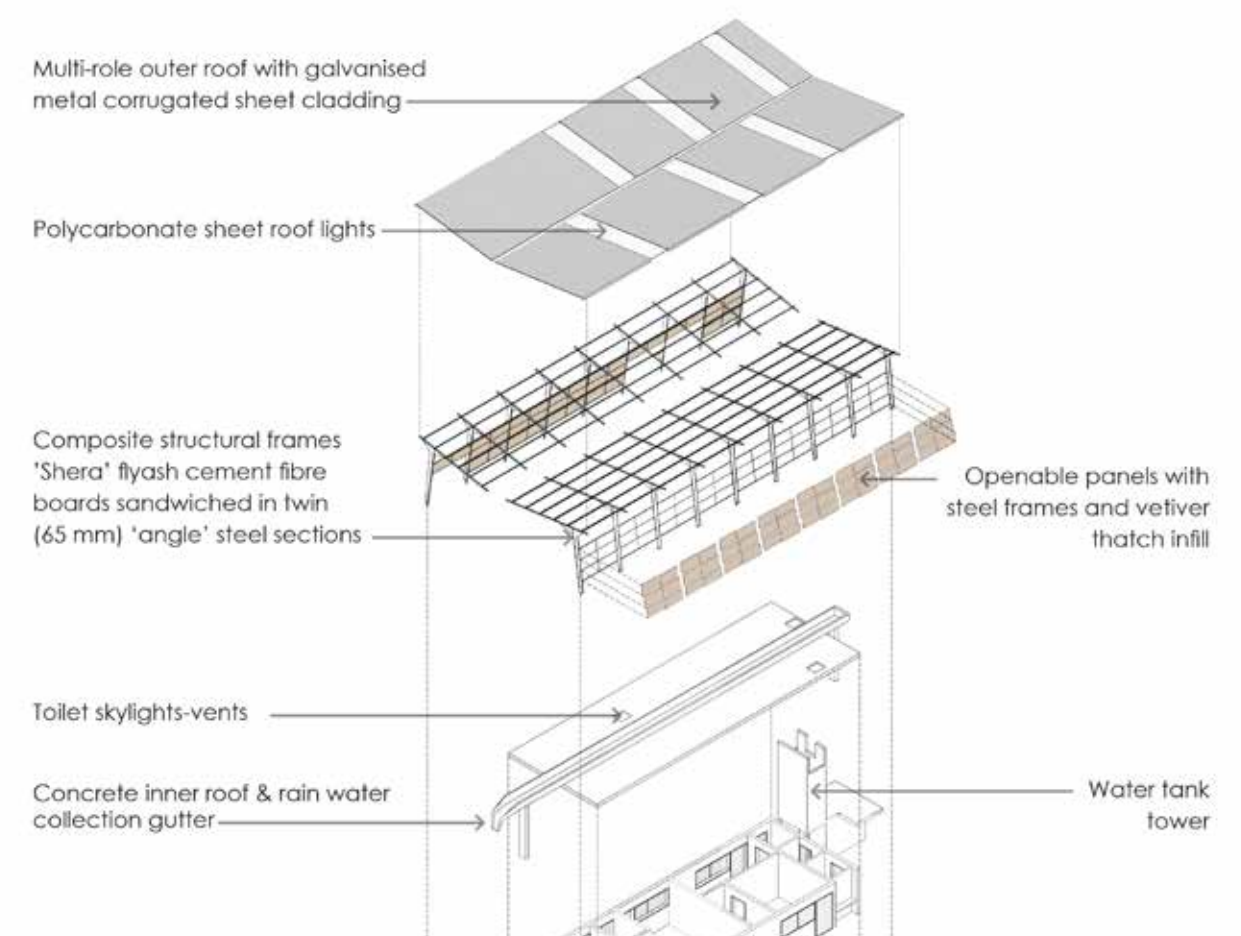
RAJESH RENGANATHAN

IYPE CHACKO

## FLYING ELEPHANT STUDIO

The practice strives to choreograph evocative layered experiences through architecture while answering pragmatic needs of program, site and locale. Their approach employs bottom-up and top-down design strategies; moving in parallel from detail to whole and vice-versa. Aspects of materiality and making occupy a significant space in expressing the architectural sensibility. A thematic interest underlying projects promotes intimate engagement with nature, while facilitating a sense of urbanity-community. Flying Elephant Studio brings to the table fresh, inventive and sensitive ways of looking at and shaping our environment; subconsciously dissolving boundaries of architecture, urbanism, landscape and infrastructure design.


Their strength lies in innovative conceptual thinking backed by demonstrated experience, skills and technical expertise to competently translate ideas into reality. The diverse nature, in building type, scale and geographic location, of commissions secured over the past 25 years gives the team a distinct professional versatility.





A double height emergency reception makes for a less claustrophobic entry to the hospital

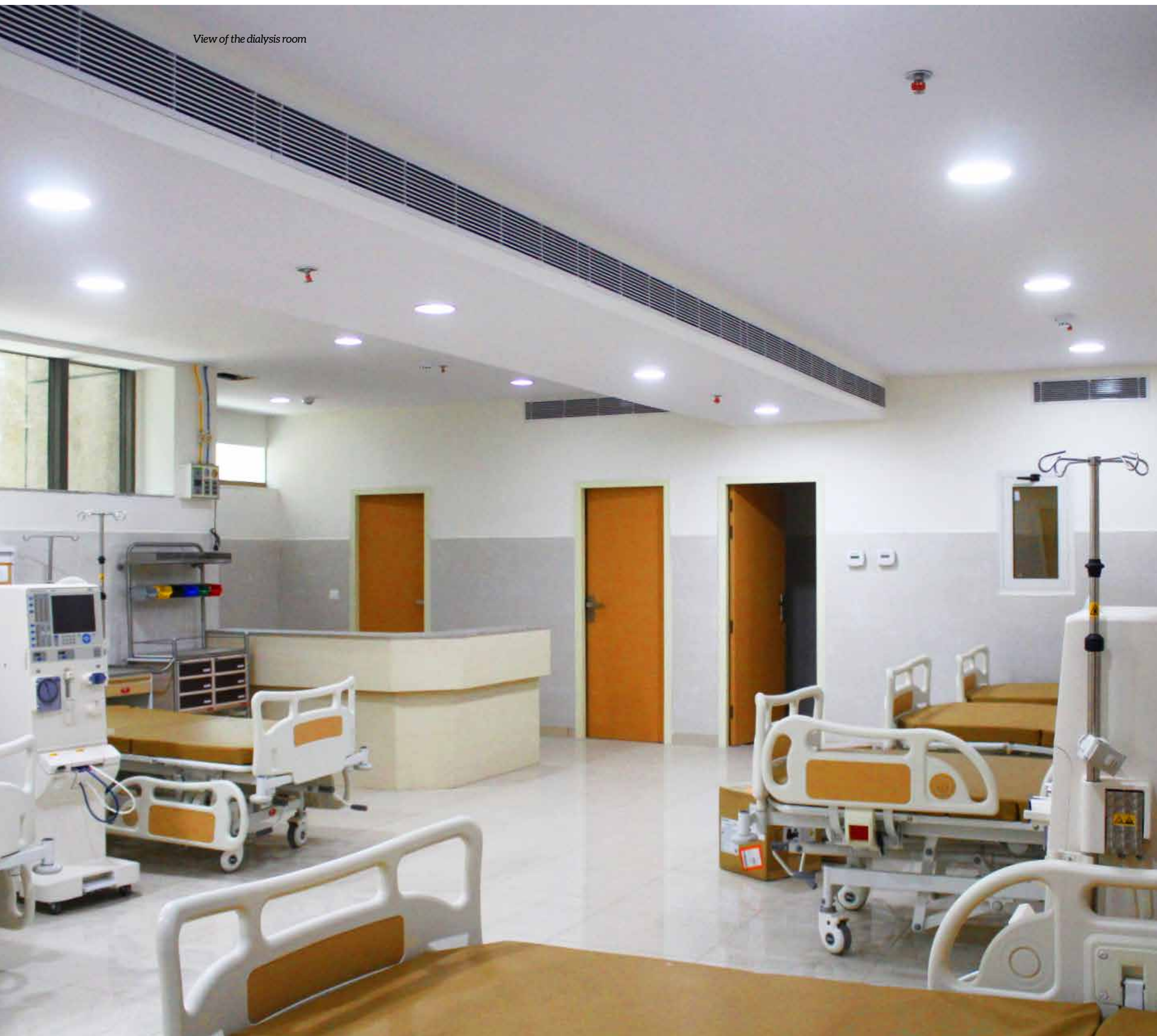
## Creating art for comfort

 Inscape Insider

PROJECT INFO	
PROJECT NAME	: MEDANTA GANGANAGAR HOSPITAL
ARCHITECTS	: MANCHANDA ASSOCIATES
LOCATION	: SRI GANGANAGAR, RAJASTHAN
BUILT-UP AREA	: 1,67,000 SQ.FT.
NUMBER OF BEDS	: 200
PROJECT COST	: RS. 72 CRORE
YEAR	: 2018

“The abundance of natural light and nature-friendly design are the major highlights of these buildings

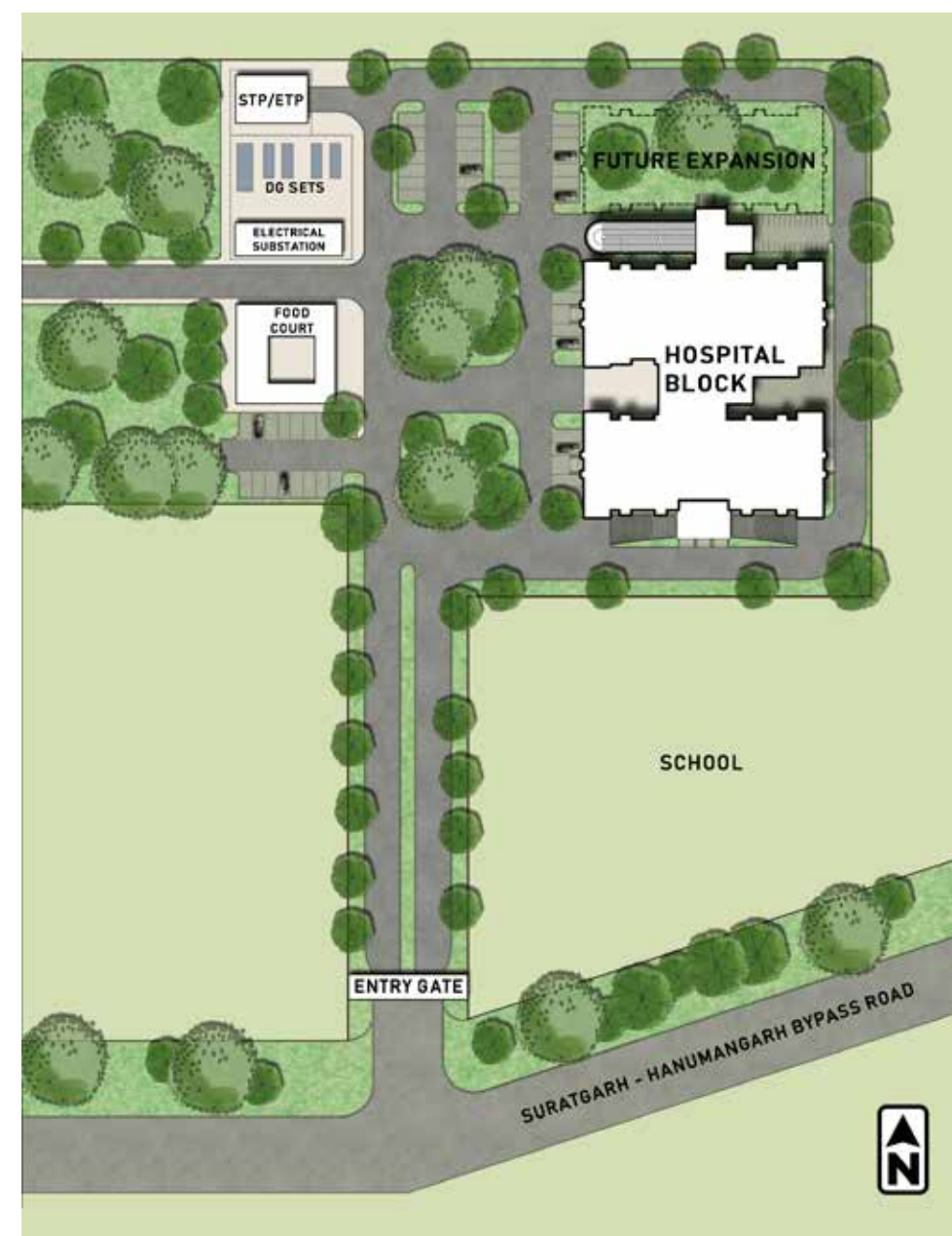
Gone are the days of dull-looking walls, narrow rooms and buildings that welcome the visitors with a strong smell of medicine. Healthcare has improved a lot and the state-of-the-art hospital designs with a humanistic approach bring in world-class facilities and service. The abundance of natural light and nature-friendly design are the major highlights of these buildings.

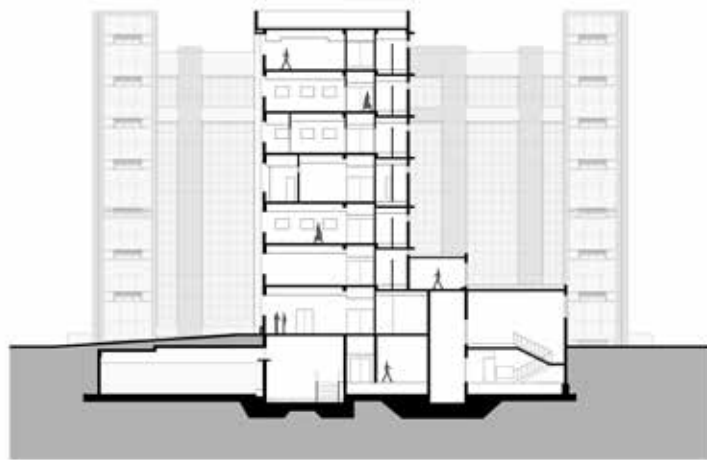


View of the dialysis room

The 200 bedded super speciality hospital Medanta Ganganagar Hospital in Sri Ganganagar, Rajasthan is a state of the art hospital that has been designed keeping in mind the latest advancements in healthcare technology and design. Several energy-efficient systems have been adopted to make the facility green and sustainable. The orientation of the buildings has been kept to maximize glazing on the north and the south faces while effectively blocking the hot sun on the eastern and the western faces. The H-shape ensures natural light and ventilation to almost the entire building while still offering mutual shade to cut down the heat.

The building shape has helped in creating distinct zones for segregating independent departments while keeping the vertical circulation central. This ensured easy and unobstructed movement of patients, doctors and visitors, which is of prime importance in the functioning of any hospital. The H-shape also enabled the addition of an additional block for future expansion. For the convenience of physically handicapped people, as well as for evacuation of patients in case of fire, the architects have added a ramp to the design that connects all levels.





SECTION



ELEVATION A

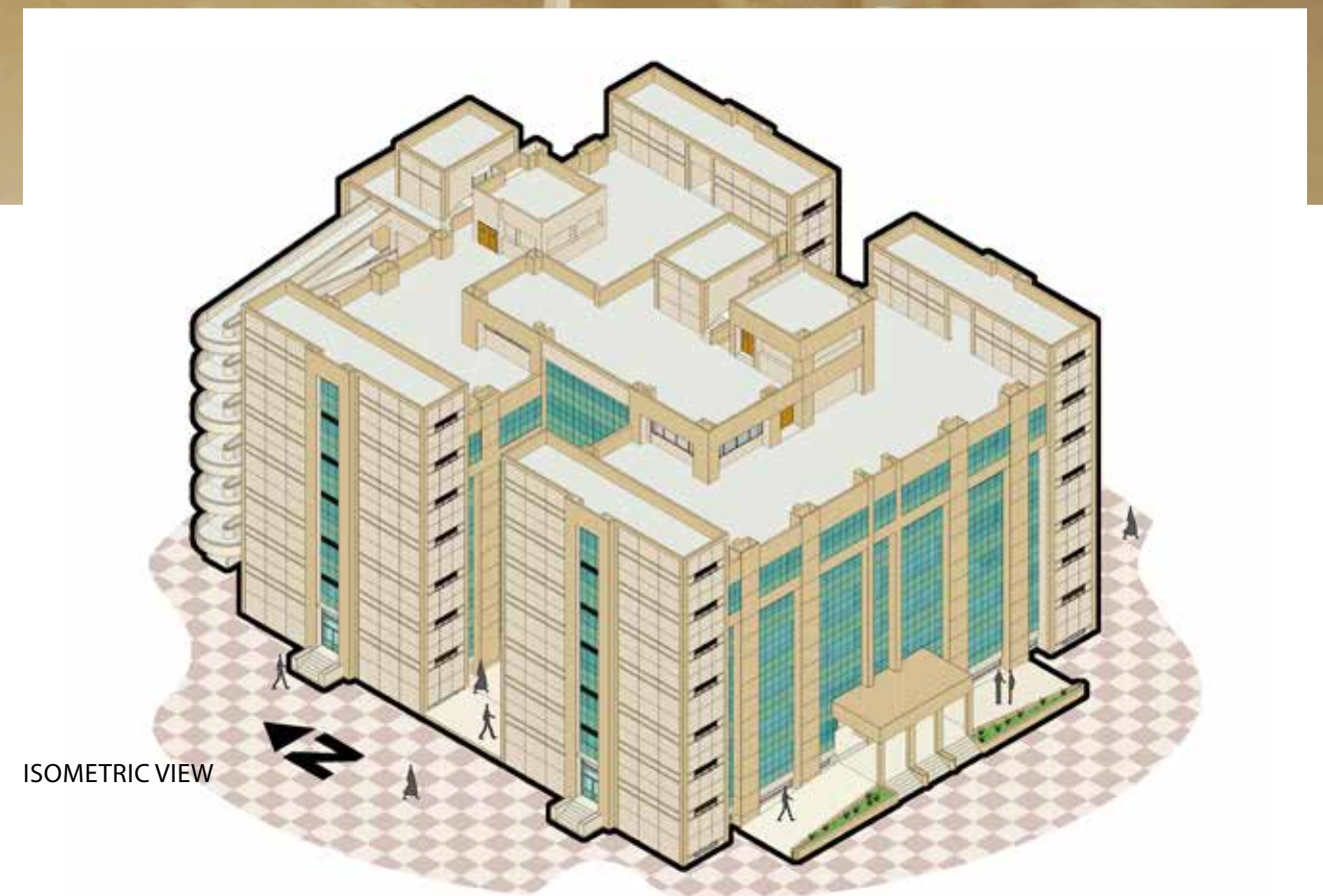


ELEVATION B



Orange and white colour combination gives the place a pleasant look

Wall and floor finish for wards, ICUs and waiting areas are selected in such a way that infection and dust accumulation is minimised. Sizes of the tiles were chosen in such a way that the number of joints was minimised. Antibacterial paint is applied on walls to cut down on the spread of infection. The subtle orange and white colour scheme is used to make the spaces simple and pleasant looking. The design philosophy adopted for the services ensure a robust and easily maintainable system as the region lacks trained manpower. Any breakdown would require a company service engineer to come from another city.



ISOMETRIC VIEW



Operation theatre wall has a soothing blue colour



Lab area



Well equipped emergency room



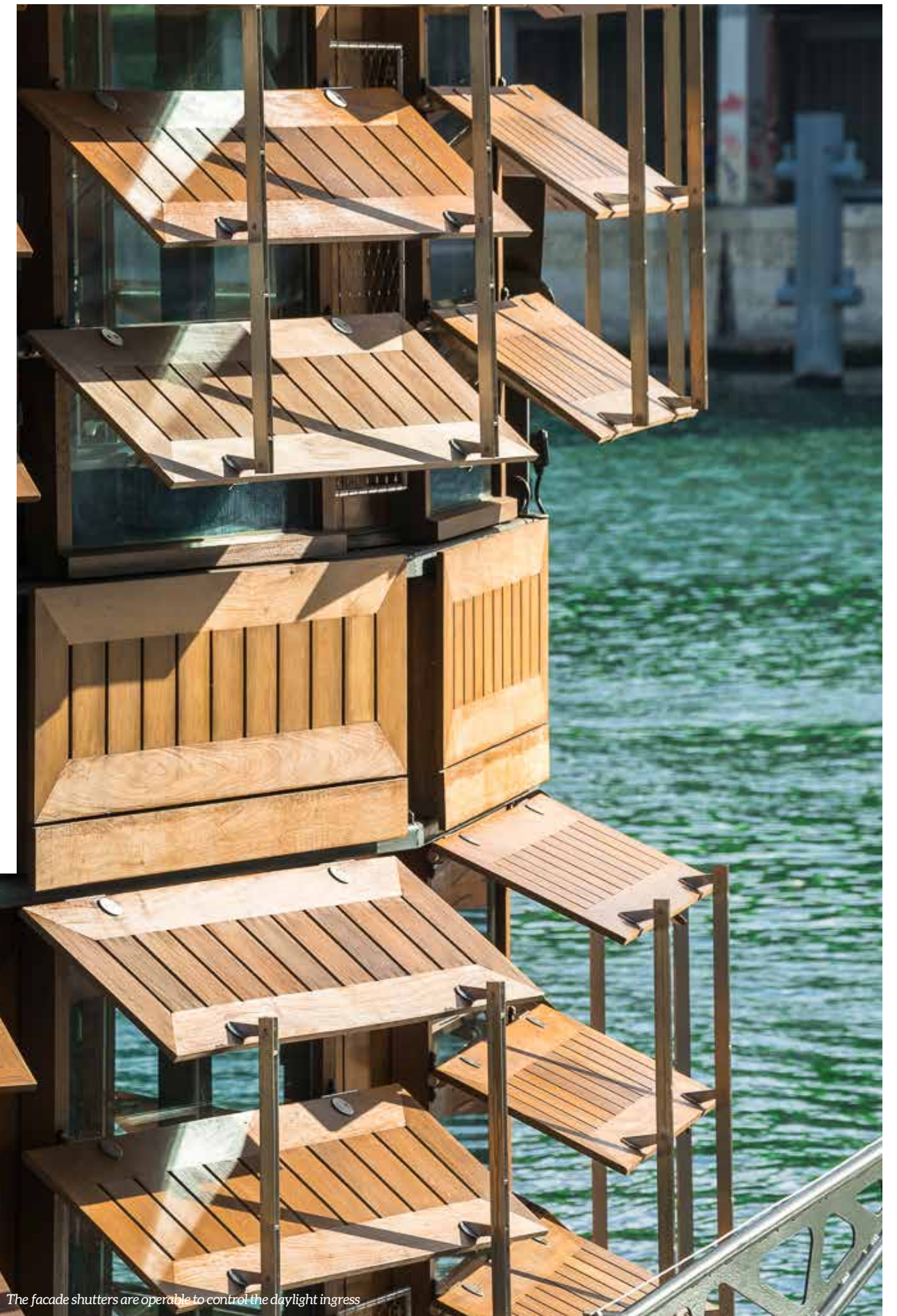
SHOMIT MANCHANDA

## MANCHANDA ASSOCIATES

It is a professional consultancy firm, offering expertise in architecture, hospital design, interiors, health care planning as well as urban and environmental design. It consists of a complimentary design team capable of providing above range of services and is also a leading name among hospital architects in India. The projects range from Medical Architecture, Hospitals, Clinics, Office Interiors, Industrial Buildings to Plotted residences. The firm's focus has been to create low cost, environment friendly and energy efficient buildings.

Though the project did not undergo any green rating, systems have been adopted to make the building green, sustainable and energy-efficient. Insulated glass panels have been installed to minimize heat gain while still maintaining large glazing for increasing day-lighting within buildings. Wastewater recycling and high-efficiency chillers for HVAC were some of the strategies that were also implemented.

The glazed exteriors provide uninhibited views of the surrounding area and create a visual connection between the exterior and interiors. The sandstone finish to the walls also gives it a vernacular appeal. The architects have designed the building not just as a functional space but also as a space that provides comfort and user experience through architectural language.



# 'La Seine' Zen

Inscape Insider Sergio Grazia

## PROJECT INFO

PROJECT NAME : ADAMANT HOSPITAL  
LOCATION : PARIS, FRANCE  
ARCHITECTS : SEINE DESIGN  
YEAR : 2019

LL

*Existing notions of confined care is redefined to adopt a more open, warm and welcoming atmosphere.*

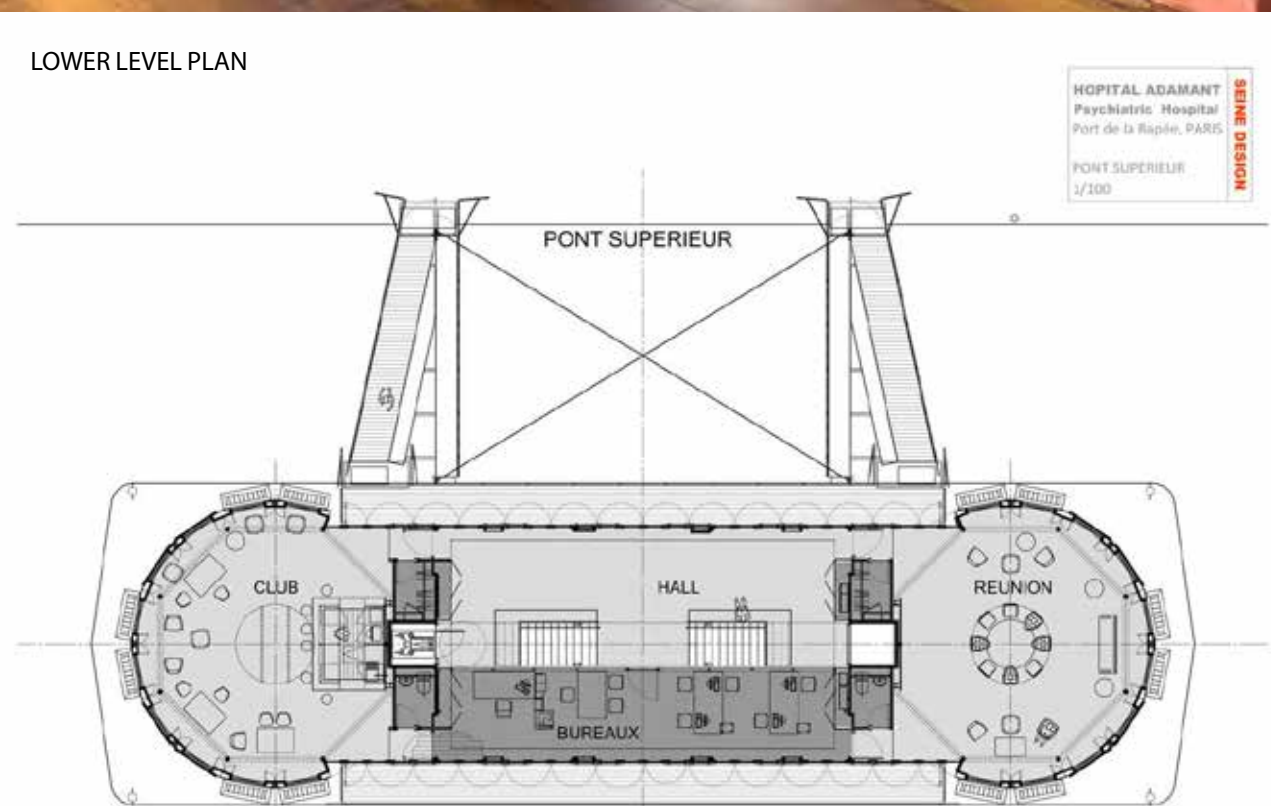
Psychiatry is a highly sensitive domain within healthcare as it deals with the intangible intricacies of the human mind rather than the body. The design of a facility catering to such a delicate user group should thus be sensitively responsive, a space where design induces healing and recovery. The Adamant psychiatric Hospital in Paris is one such prime exemplar, where existing notions of confined care is redefined to adopt a more open, warm and welcoming atmosphere. A testimony on how architecture and design can bring about a positive effect on the subconscious mind thereby enhancing the adopted treatment program.

The facade shutters are operable to control the daylight ingress

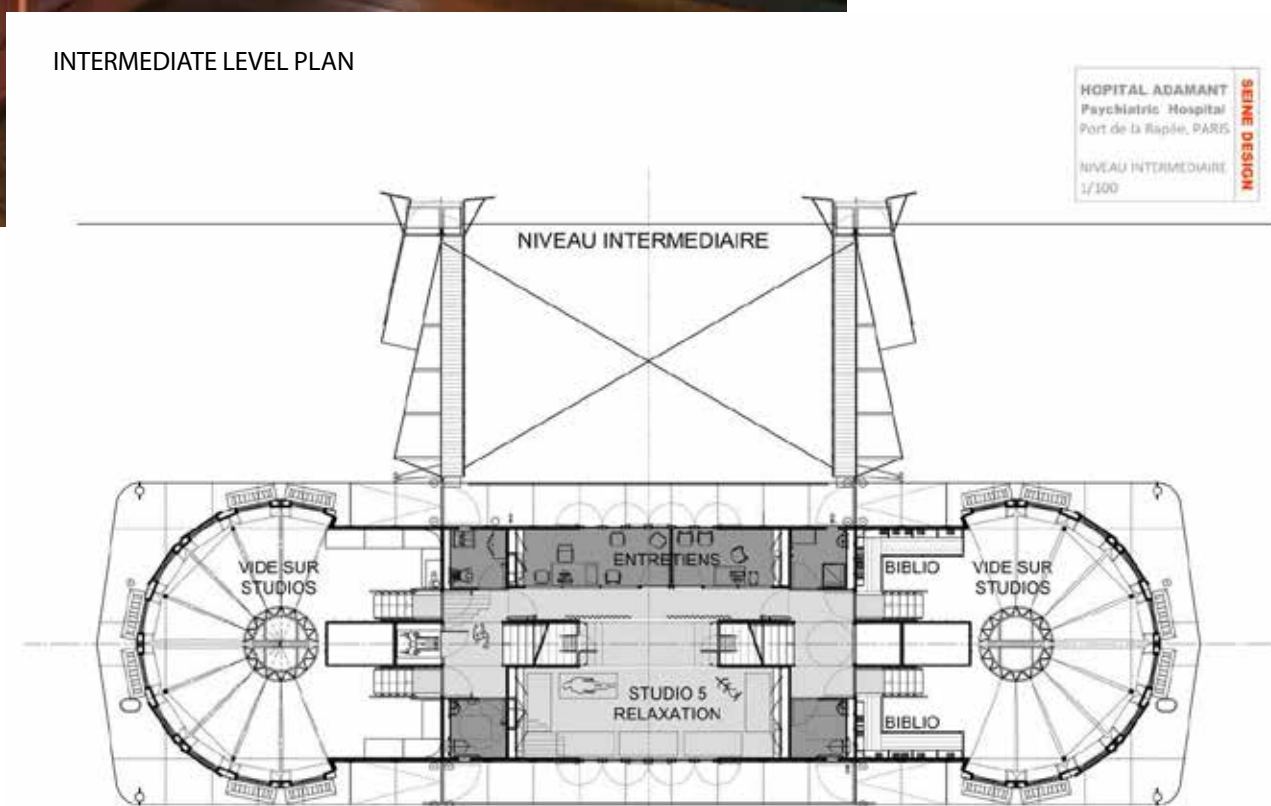


Seaters provided in the upper level hall

LOWER LEVEL PLAN



INTERMEDIATE LEVEL PLAN



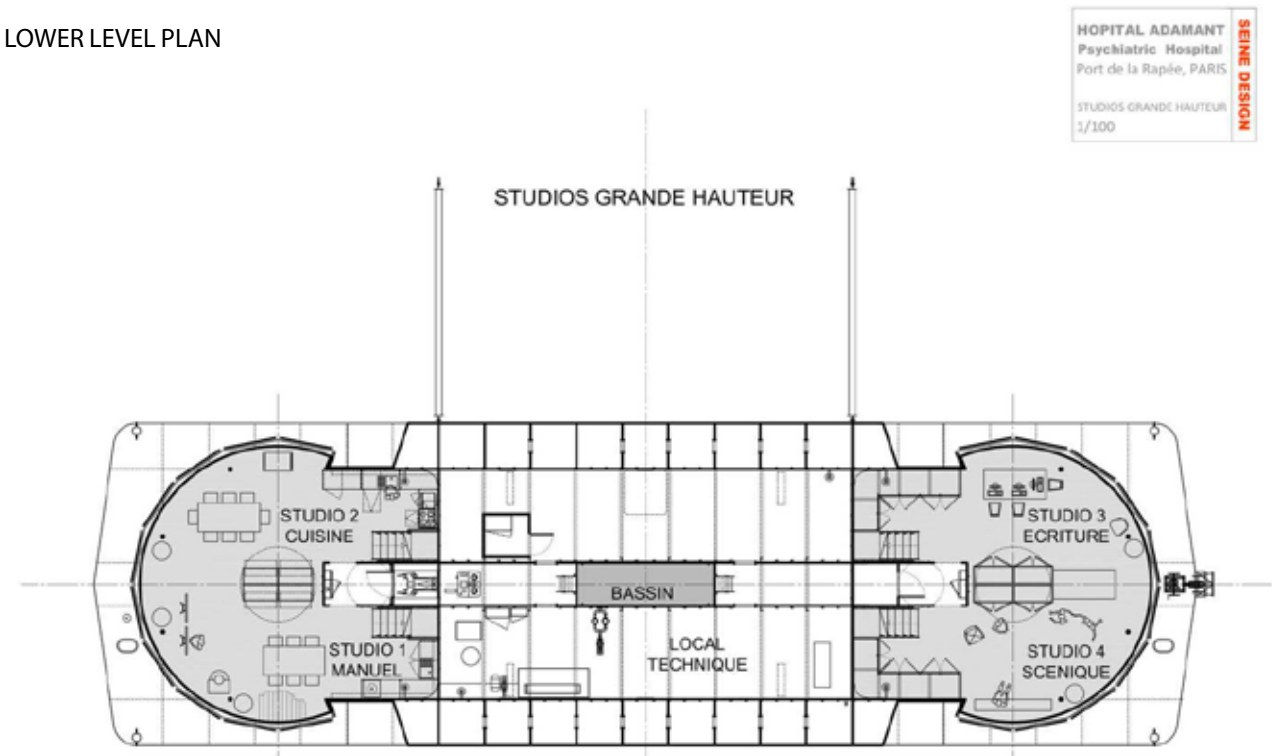
The project spells different right from the context it is placed in – situated on the River Seine, quite literally, the hospital has been conceived as a floating facility rocked by the river. The underlying outlook for such a radical concept was the need to envision a space that broke stereotypes of a psychiatric hospital by inculcating a new approach of treatment that relies on therapy workshops. The purpose being to limit the often heavy periods of hospitalization for these patients. The establishment strives to initiate this path breaking program of providing creative workshops ranging from pottery, music, drawing and much more - a space where the users wish to stay and return, a necessary condition for their reintegration into the social sphere.

Just as the project brief rightfully portrays, it was imperative to construct a building that essayed a sense of serenity, while the design in itself expresses itself as an object of exchange. This idea of the structure incorporating a narrative was executed quite honestly. The steel walls were left intact to reveal the welders' lines and annotations; an expression of leaving raw the marks of their work freezes their presence in the establishment and thus creates meaning and continuity.

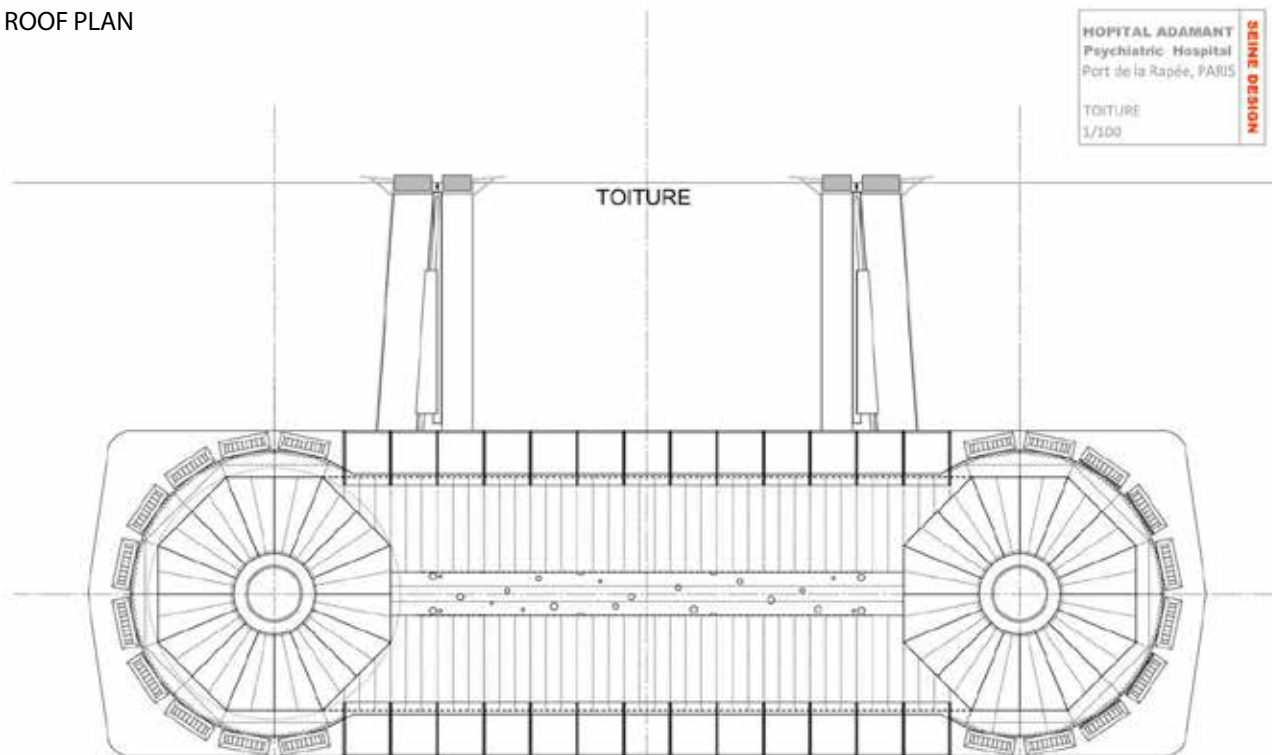
The design of the building is such that it gives meaning to the most common everyday occurrences by making them even more spectacular. Embracing nature in its entirety by celebrating weather conditions like the rain, sun and wind are materialized in instances where the downpour brings in a festive aura as it enters the heart of the building or the play of light and its reflections off the water beyond, all of which congruently conveys a spatial quality that augments healing.

On the river, the Adamant maintains a privileged relation with his environment. The exterior access bridges from the pier to the balcony sides combined with the transparency of the rotundas express the hospital's strong openness. The façade is distinctively dynamic- finished in warm wooden tones, the skin consists of mobile shutters that can control the volume of light ingress, thereby enabling a manual manipulation of spatial quality within.

LOWER LEVEL PLAN



ROOF PLAN

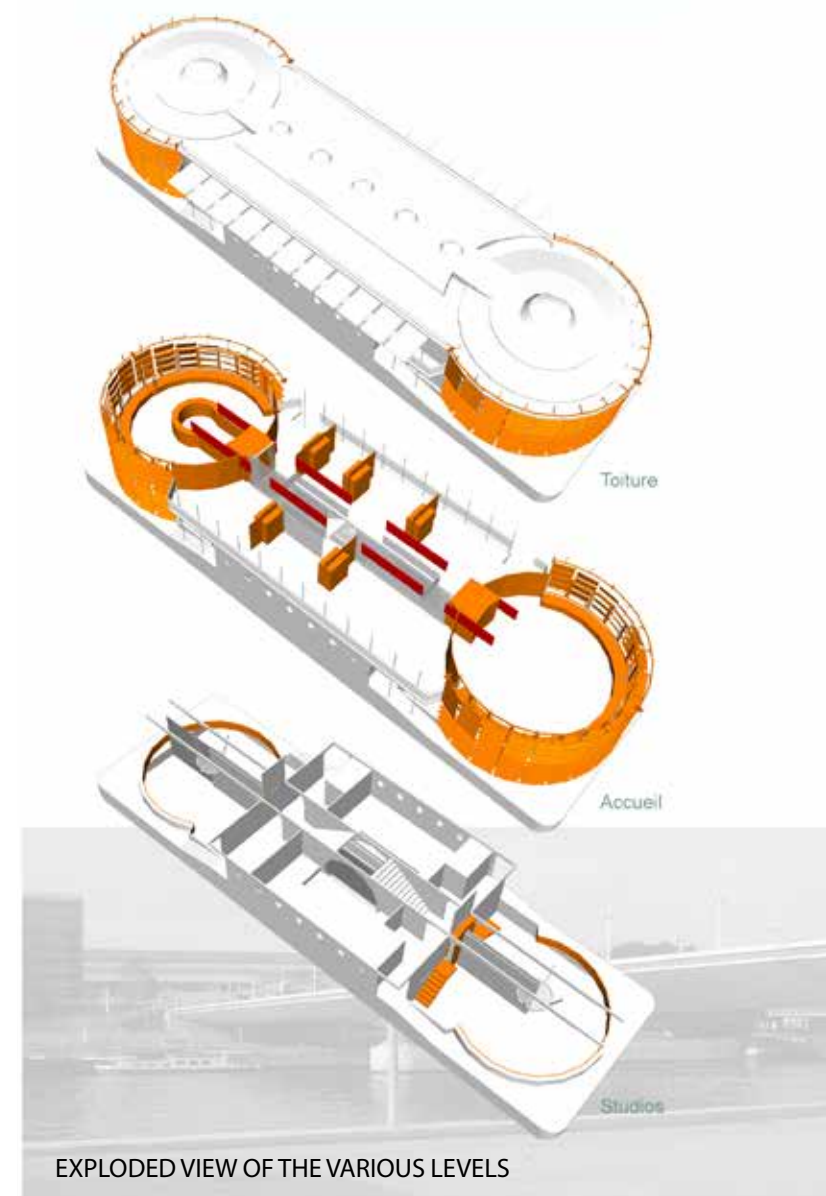


View of the facility floating on the river Seine





The activity spaces



EXPLODED VIEW OF THE VARIOUS LEVELS



Glimpse of the construction phase



GERARD RONZATTI

## SEINE DESIGN

It is with 30 years of international experience in the field of naval and floating architecture that Gérard Ronzatti and his team are proposing to provide unprecedented architectural solutions on waterways. French leader in floating architecture, the SEINE DESIGN team puts its know-how at the service of the territories and their inhabitants. Architectural projects with high societal value, floating buildings respectful of the water and their environment or even mobility via the river are all elements that mark out its overall approach. Fully integrating into the paradigm of the sustainable city, SEINE DESIGN urges a respectful return to the water, new ways of living and understanding it. Architectural standards, innovation and socio-ecological concerns thus constitute the values defended by this architectural agency unlike any other.

This spatial quality is of epitome importance in determining whether the patient's preference of programme is positively responsive. Thus, specific care has been given to the interior treatment of therapy spaces. The exposed design language of natural wood and steel invoke a strong emotional attachment complemented by the appealing water reflections reinforcing the overall warm and domestic aspect.

The design follows a symmetric layout so as to materialize its institutional dimension and also to express its character from a public perspective. The spaces are split vertically across three levels respective of its function. The top-most floor has the primary access ramp from the pier and houses the lobby, admin areas, club and meeting spaces.

As you move down, the intermediate floor incorporates the consultation and general studio rooms along with a dedicated relaxation room. The studios are conceptualized as self-defining spaces that can individually be customized as per the patients personal interests. The lowermost level caters to the specialized workshop oriented studio spaces and technical rooms.

Since its inception, the hospital has received overwhelmingly positive responses from the public and patients for its innovative design concept and treatment programme. This project thus initiates the need for architects and designers to broaden their perspective of conceptualizing spaces designated for healthcare, the expanse of possibilities where design becomes a therapy in itself.



# Tantalizing Canvas

 Inscape Insider  Nikhileswar Baruah

Art finds its pure form of expression when heightened or put to its extremities. Can a painting evoke the deepest thoughts of the mind? Can it reveal the inner layers of thoughts? Is it the artist capturing a moment speaking, or is it the voice of the audience visualizing the spectacle? There are numerous meanings behind an art, grappling your infinite and finite emotions and exposing it to the outside world. Artist Nikhileswar Baruah performs ethereal magic that flows from his hands as he dips and dashes the brushes over his canvas.



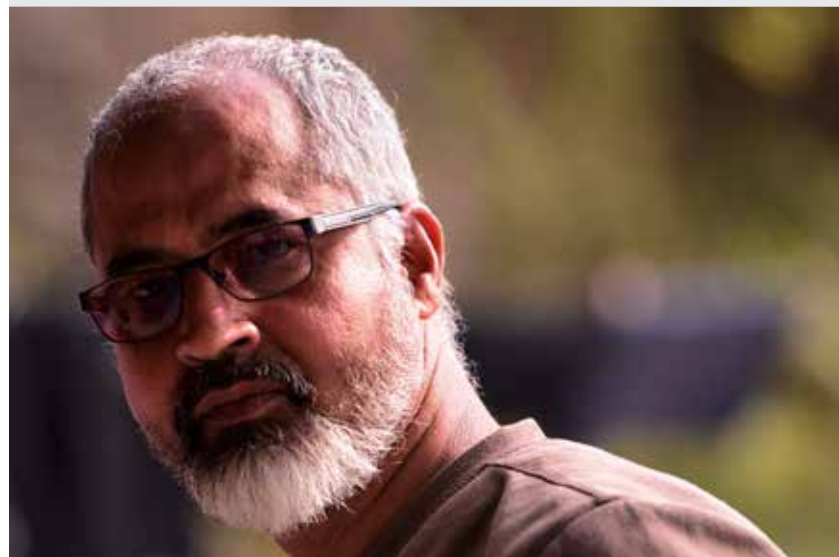
Midnight Blue



Lockdown II



Lockdown III



### NIKHILESWAR BARUAH

Nikhileswar Baruah was born in 1968 in Assam, India. He did his graduation and post-graduation from the Department of Painting, Faculty of Fine Arts, M.S. University of Baroda in Gujarat, India.

He was awarded Unesco-Aschberg Bursaries to work at European Ceramic Work Centre, the Netherlands, in 1997, "Harmony-Emerging Artist of the Year" award (Mumbai) in 2000, and Senior Fellowship in the field of Visual Arts from Ministry of Culture, Government of India in 2014. Nikhileswar has had seven solo shows, participated in many group shows and artist camps/workshops. His other interests are cinema, theatre, and literature. He lives and works in Guwahati and Vadodara.

His works mostly deal with the predicament of contemporary living. During the 1990s his initial works resonated on the socio-political issues, using elements of violence with reference to newspapers and magazines.

His focus gradually shifted from the social to personal- an individual's response to the complexity of urban living, while the highly structured, geometrically coherent towers suggested an unnatural simplicity. Mr Baruah was always interested in his immediate environment, but that environment is coloured and brushed by his state of mind. His art portrayed a concoction of what is happening outside and what is happening inside (his mind).

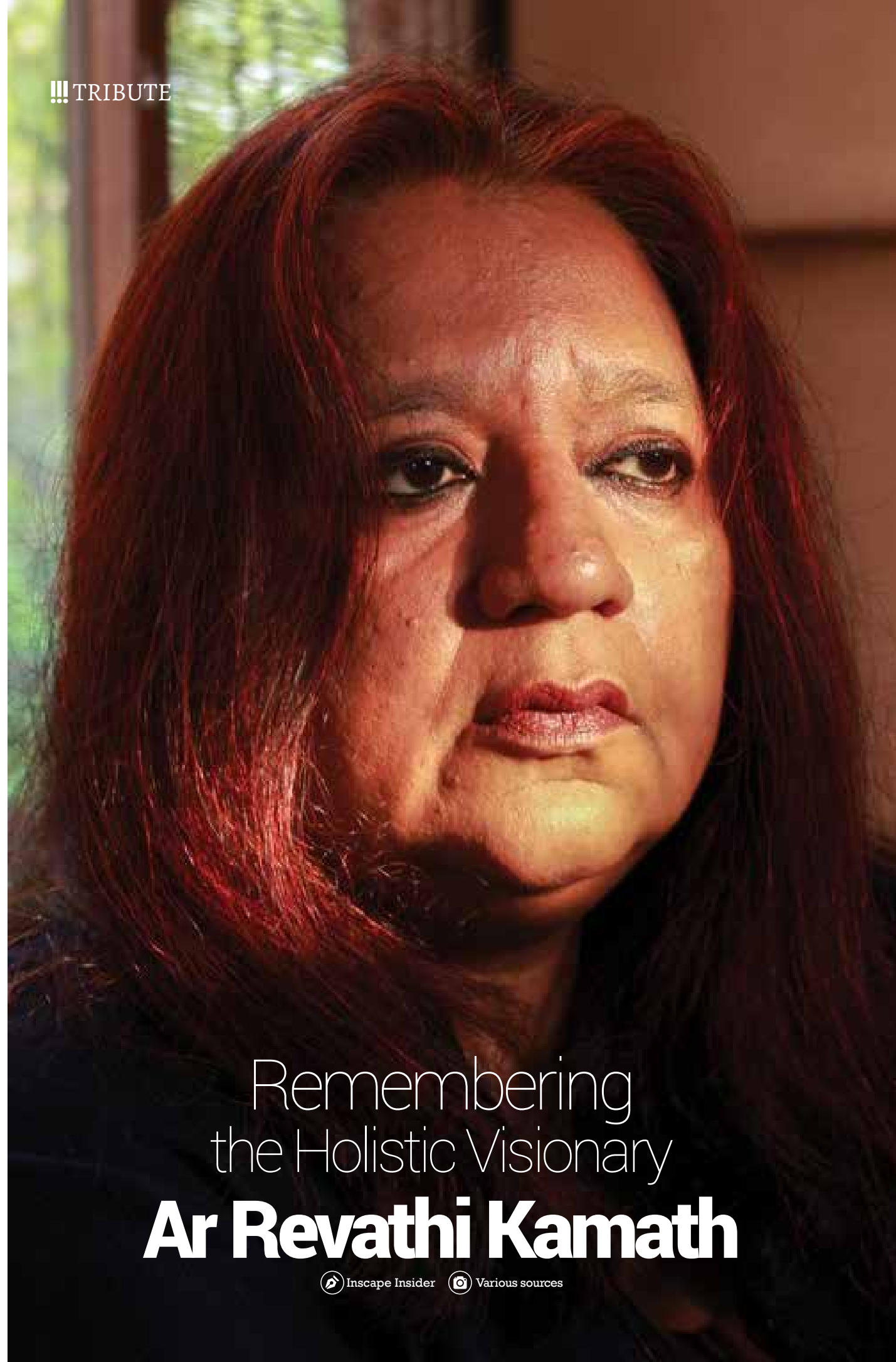
A very peculiar aspect he uses in his art is the radiance of light. The illuminated effect on his paintings had a more theatrical scenario than natural. The theatricality in itself is aggrandized and exponentially expressed with a monochromatic palette. Most of his paintings bore a symmetrical composition that catapulted the artwork beyond the real world, even though the figuration, rendering, perspective are realistic. The language used by the artist makes his work appear tranquil, almost soothing and calming. This electrifying contradiction allows one to experience his work in a subjective way rather than reading it literally.



Industrious



Happy Man



# Remembering the Holistic Visionary **Ar Revathi Kamath**

Inscape Insider Various sources

Architect Revathi Sekhar Kamath, a pioneer of mud architecture who shaped a new dimension in the contemporary era, passed away on July 21st, 2020. She believed in a holistic way of moving forward and harmony with nature, forming an ecological civilization that becomes the collective future of humanity. Her inspiration and ideologies have left an indelible void.

Revathi Kamath was an architect and planner, based in Delhi. She has explored and revolutionized mud architecture, utilizing materials generally associated with India's most impoverished communities to build luxury structures for resorts and wealthy private homeowners, while also working with the unprivileged sections. She wanted to remove the association and assumption of mud only as of the material for poor people in society. Her works speak for her ideologies very well, also credited with designing the tallest stainless steel structure (a 33-metre high gateway) in India for the super thermal power plant at Raigarh, Chhattisgarh.

She was the co-founder of New Delhi based architecture, planning, and environment focused consultancy firm Kamath Design Studio. Earlier, in September 2019, her partner and co-founder, Vasant Kamath had left for the heavenly abode. Kamath Design Studio produces work informed by an explicitly environmental agenda. The work creatively synthesizes attitudes and technologies into an aesthetic habitat and way of life. The studio is now under the aegis of their son, Ayodh Kamath.

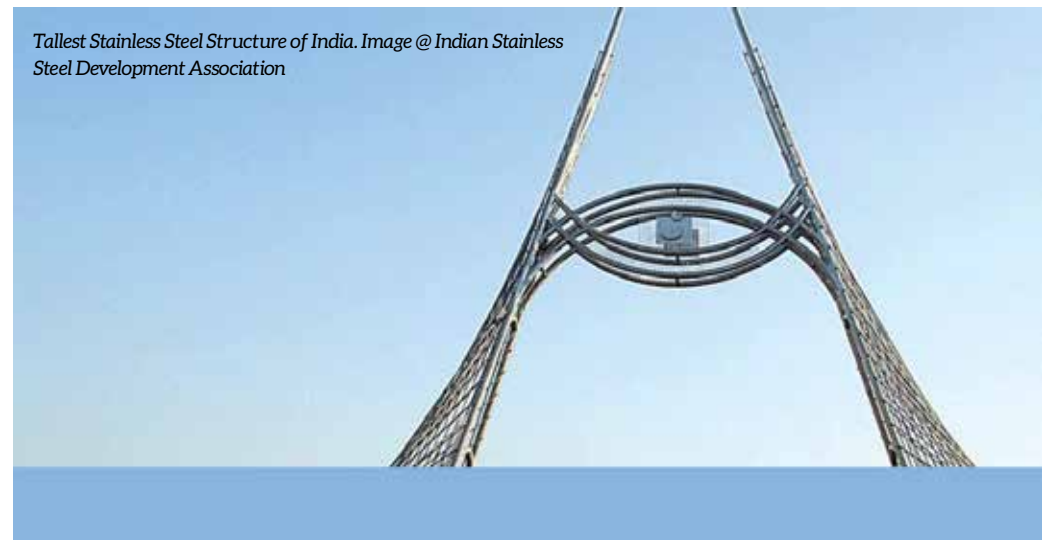
Her early years went through reading many architectural journals of her civil engineer grandfather and the contemporary works of grandmaster architects that ultimately sparked her interest and deepened her understanding of different forms of architecture.

She was born in Bhubaneswar, Odhisa in the year 1955. She obtained her Bachelor's in Architecture and a post-graduation in Urban and Regional Planning in 1981 from the School of Planning and Architecture, Delhi. After that, she worked with Joseph Allen Stein, B. V Doshi and Dr J . R Bhalla (SDB Consultants) for a year and later with various architects and furniture designers in New Delhi. In 1981, she set up the firm of 'Revathi and Vasant Kamath', Architects, Delhi, with her husband, Vasant. The firm subsequently became 'Kamath Design Studio', with their

son Ayodh joining the firm. She has also worked for the National Institute of Urban Affairs and was the visiting faculty for four years and as an Assistant Professor for five years at the School of Planning and Architecture, New Delhi.

She is an ardent believer of architectural consciousness being holistic and contemplating human culture and civilization through space and time. The practice of architecture always enables an individual to be hydra-headed and evolve a multitude of interests and skills. She strongly feels that the different attributes can blend seamlessly into a complex whole of the spiritual and material, meditative and expressive, subjective and rational, technical and artistic and the poetic understanding.

Tallest Stainless Steel Structure of India. Image @ Indian Stainless Steel Development Association



Gnostic Centre, New Delhi. Image @ teriin.org



Desert Resort in Mandawa - Rajasthan. @ teriin.org

Tomar House, Hauz Khas, South Delhi. Image @Kamath Design Studio



## POST COVID-19 DESIGN INTERVENTION: Indore Regional Chapter

Humanity is going through an unprecedented crisis and we are all anxious and uncertain of our future. Historically Design has always risen to the challenges of the times. Design if it has to succeed has to respond to the user's needs and aspirations.

Keeping this in mind we decided to motivate and provide the student fraternity with an opportunity to utilize the Lockdown time gainfully to rethink design and adapt it to our changing times.

A 'State Level student competition' which would explore innovative and ingenious ways to develop spaces that encourage social distancing and allow minimum contact of shared surfaces, was conducted for MP. It's our regret that we could not include a far larger student community as we got enquires and requests for participation from all over the country.

Through this competition we wanted students to IMAGINE, DESIGN AND DETAIL a physical space for any of the 2 Categories to explore: Residential or Commercial (Retail, Office, Hospitality, Education). The TASK was to envision an interior space proposed for post COVID scenario. The design had to clearly illustrate the novel interventions suggested with a minimum of 5 elements used in design (such as design details, Technology, innovative products, specifications, and hardware or system solutions). Attractive prizes were offered which definitely was a good bait. It was an new experience for us as the entire exercise was totally on line. We too adapted to this new normal.



**STATE LEVEL STUDENT COMPETITION**

History is going through an unprecedented crisis and we are all anxious and uncertain of our future. Historically Design has always risen to the challenges of the times. Design if it has to succeed has to respond to the user's needs and aspirations.

The COVID-19 has led to unprecedented spread through contact in shared surfaces. Can design offer an answer to the spread by reconfiguring shared spaces and encourage social distancing and allow minimum contact of shared surfaces. Through this competition we want you to IMAGINE, DESIGN AND DETAIL a physical space for any of the categories given below.

**EDUCATIONAL** This is a physical space for a school, college or university. The design should be for a post COVID scenario. The design should be for a post COVID scenario. The design should be for a post COVID scenario.

**COMMERCIAL** This is a physical space for a retail, office, hospitality, education, etc. The design should be for a post COVID scenario. The design should be for a post COVID scenario. The design should be for a post COVID scenario.

**CATEGORIES** This is a physical space for a retail, office, hospitality, education, etc. The design should be for a post COVID scenario. The design should be for a post COVID scenario. The design should be for a post COVID scenario.

**PRIZES & WINNERS**

**RESIDENTIAL**

1. Winner: ₹1,00,000

2. Runner Up: ₹50,000

3. Third Place: ₹25,000

4. Fourth Place: ₹10,000

5. Fifth Place: ₹5,000

6. Sixth Place: ₹2,500

7. Seventh Place: ₹1,000

8. Eighth Place: ₹500

9. Ninth Place: ₹250

10. Tenth Place: ₹100

**COMMERCIAL**

1. Winner: ₹1,00,000

2. Runner Up: ₹50,000

3. Third Place: ₹25,000

4. Fourth Place: ₹10,000

5. Fifth Place: ₹5,000

6. Sixth Place: ₹2,500

7. Seventh Place: ₹1,000

8. Eighth Place: ₹500

9. Ninth Place: ₹250

10. Tenth Place: ₹100

**THE JURY**

Ar. Kalpana Babar, Technocrat

Dr. Vikas Thakkar, Vikas Thakkar and Associates @vikasthakar

Ar. Akshay Sankar, H & A Consultant @arashayvekar

Ar. Manoj Choudhary, Design Avenue

**WINNERS**

1. Winner: ₹1,00,000

2. Runner Up: ₹50,000

3. Third Place: ₹25,000

4. Fourth Place: ₹10,000

5. Fifth Place: ₹5,000

6. Sixth Place: ₹2,500

7. Seventh Place: ₹1,000

8. Eighth Place: ₹500

9. Ninth Place: ₹250

10. Tenth Place: ₹100

**POST COVID-19 DESIGN INTERVENTION STATE LEVEL STUDENT COMPETITION**

The entire completion had blind (number coded) entries to maintain absolute transparency and fairness. We had an experienced jury panel of 4 across 2 cities Indore and Bhopal.

**THE JURY**

Ar. Kalpana Babar, Technocrat

Dr. Vikas Thakkar, Vikas Thakkar and Associates @vikasthakar

Ar. Akshay Sankar, H & A Consultant @arashayvekar

Ar. Manoj Choudhary, Design Avenue

**WINNERS**

1. Winner: ₹1,00,000

2. Runner Up: ₹50,000

3. Third Place: ₹25,000

4. Fourth Place: ₹10,000

5. Fifth Place: ₹5,000

6. Sixth Place: ₹2,500

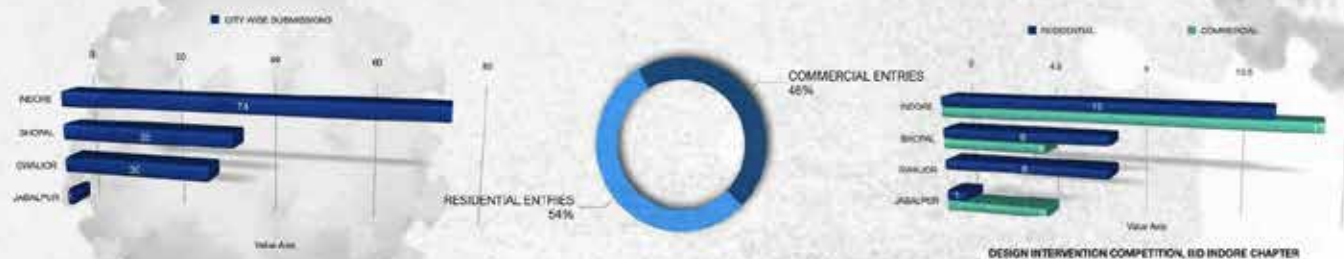
7. Seventh Place: ₹1,000

8. Eighth Place: ₹500

9. Ninth Place: ₹250

10. Tenth Place: ₹100

We were overwhelmed with the Response. 150+ entries with over 225 students displayed their overwhelming interest, enthusiasm and keenness in participating in the above contest. See the statistics



Here we present a small section of the work submitted. All of the participants put in a huge effort and it's unfortunate that we could award only a select few, so we had a special mention of 3 entries in each category.

**Organised by IIID Indore Regional Chapter**

Naseemuddin Qureshi, Chairperson

Shital Kapade, Chairperson Elect

Rahul Mahija, Hon. Secretary

For Queries & Submissions contact: Mr. Jagjeet Singh Tuteja, IIID Indore, Managing committee member

**THE JURY**

Ar. Kalpana Babar, Technocrat

Dr. Vikas Thakkar, Vikas Thakkar and Associates @vikasthakar

Ar. Akshay Sankar, H & A Consultant @arashayvekar

Ar. Manoj Choudhary, Design Avenue

## COMMERCIAL CATEGORY

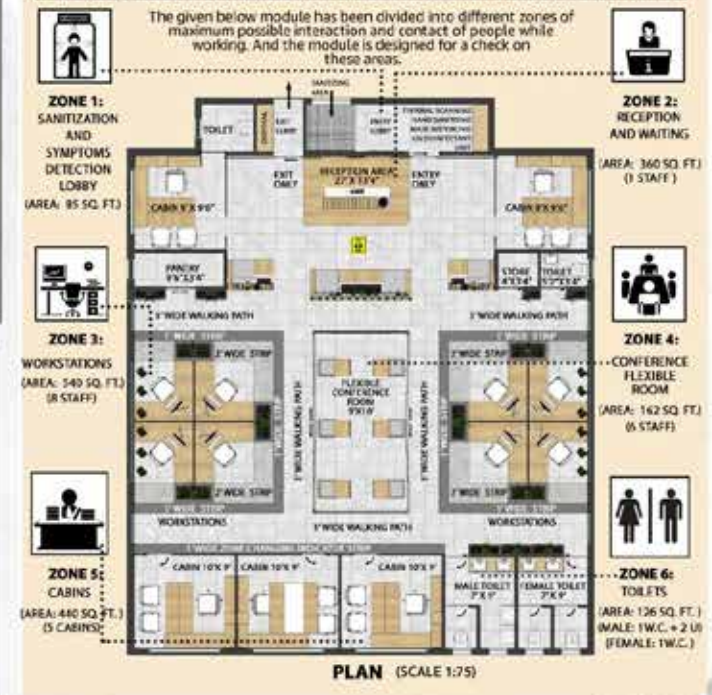
01

CROSS OFFICE

DEVESH LULLA & NANSI KESHARWANI, IPS ACADEMY INDORE



### AREA STATEMENT & ZONING OF DESIGN MODULE



### JURY COMMENT

This design shows a mature approach in analysis of the problem and working out solutions to each step. Special mention for the effort put in detailing of the flexible conference furniture and the symptom detection unit. An overall well thought out, detailed and articulately presented work.

02

INTERPLAY

SNEHAL BHARGAVA, MANIT BHOPAL



### JURY COMMENT

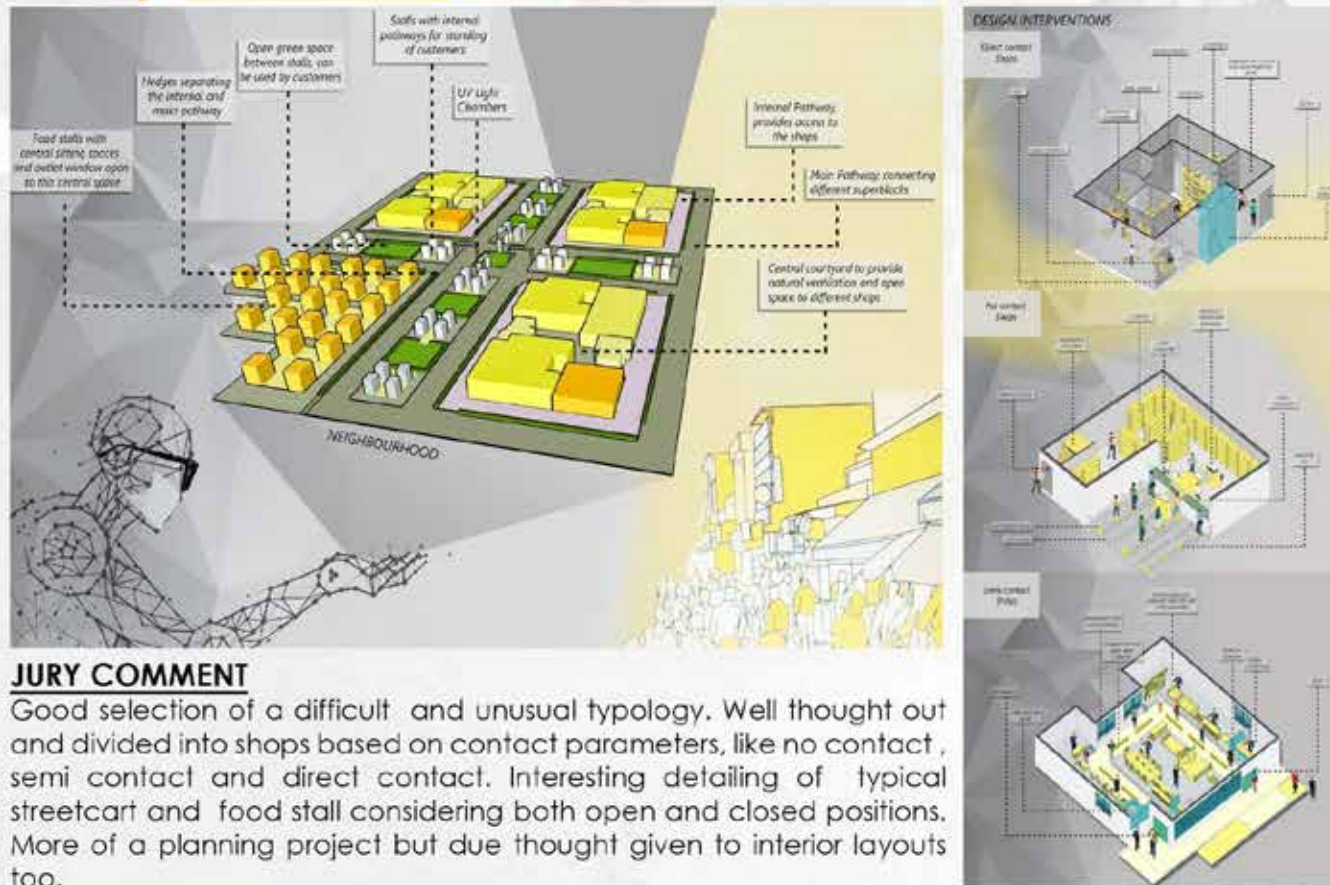
Live work and play we liked that. Apart from taking care of all the obvious features needed this approach also takes into account the mental well being of the users. Modest effort has been made to detail out the furniture units. Excellent tag line: Retrofit for now, reconfigure for near and reinvent for far. You could have shown all the 3 possibilities and made a huge impact.

## COMMERCIAL CATEGORY

02

### ROVE MARKETS

AMRUTA GADRE, BHOPENDRA SONI, NIVEDITA SHARMA, RASHI GOUR, MITS GWALIOR



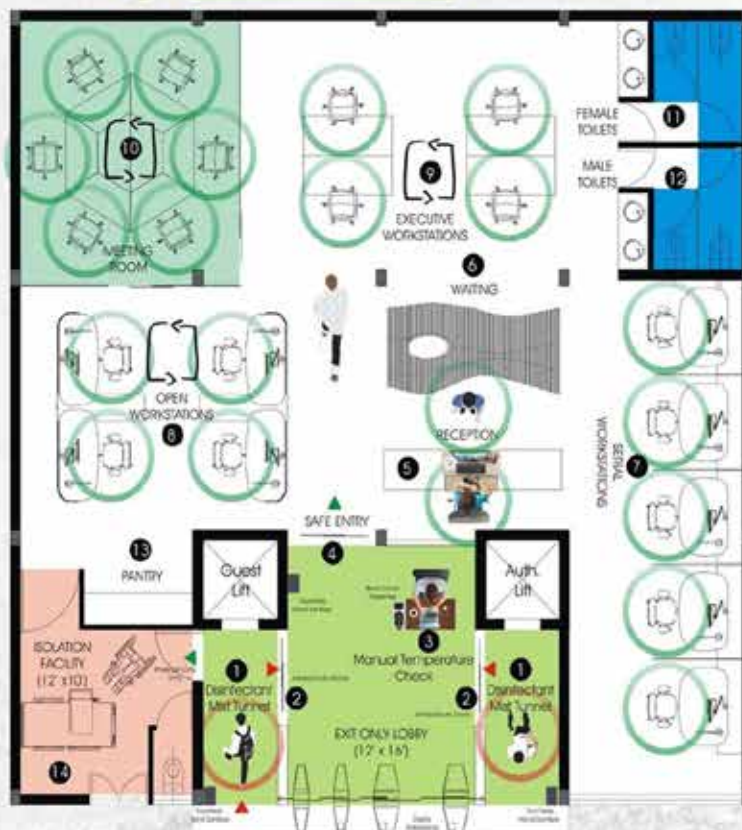
#### JURY COMMENT

Good selection of a difficult and unusual typology. Well thought out and divided into shops based on contact parameters, like no contact, semi contact and direct contact. Interesting detailing of typical streetcart and food stall considering both open and closed positions. More of a planning project but due thought given to interior layouts too.

03

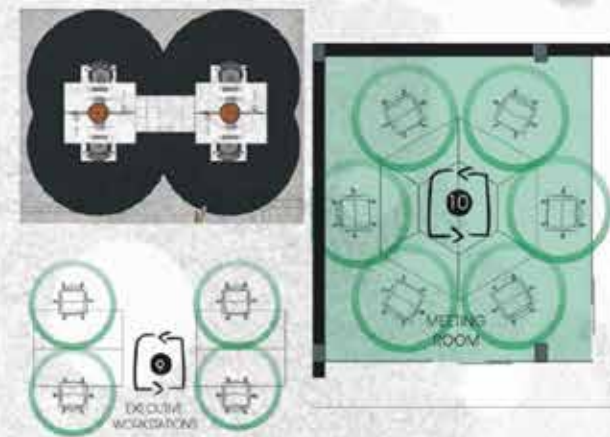
### REWORK

GUNJAN MISHRA, GOVT. WOMEN POLYTECHNIC BHOPAL



#### JURY COMMENT

A well thought out and articulate graphical presentation. Good tagline. The entry control was worked out in great detail. The rest of the office followed most of the safety norms but here you could have added your own ingenuity in the detailing too. Good idea to have a medical emergency room. Most of the technology illustrated were the obvious ones. More effort on the aesthetic impact is suggested.

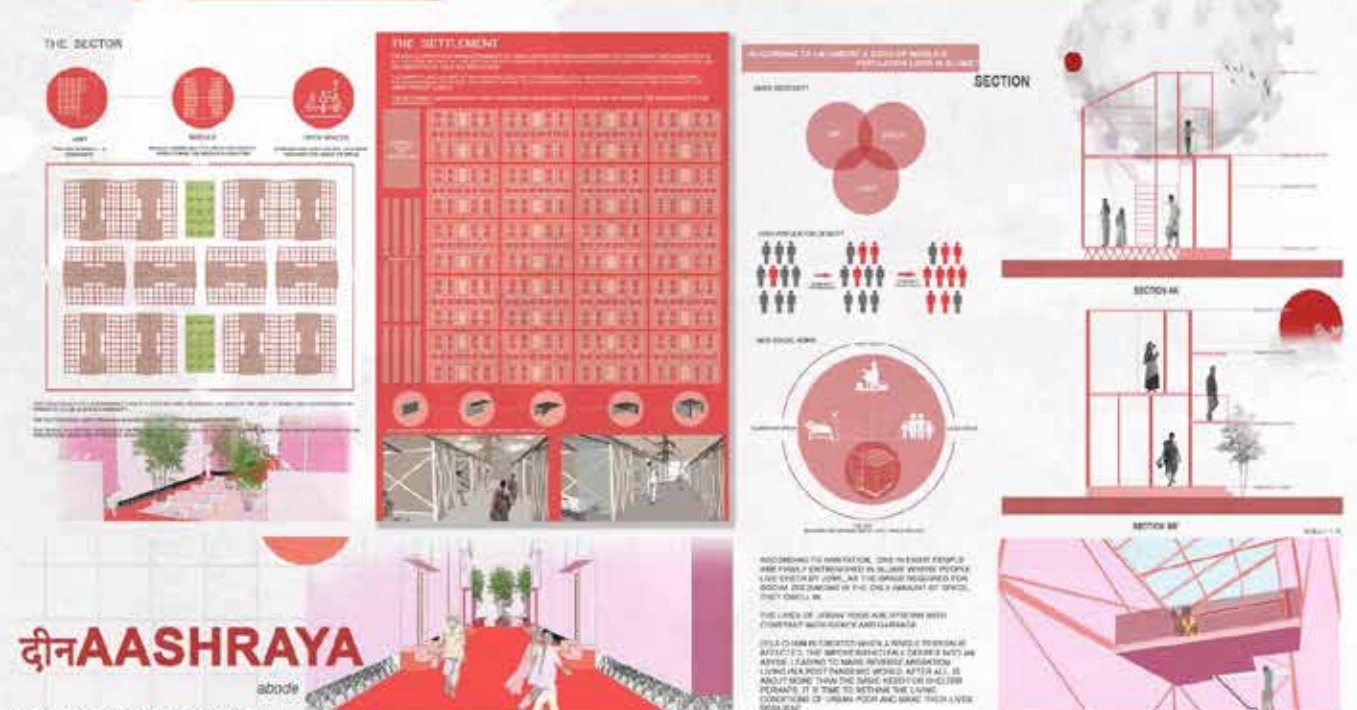


## RESIDENTIAL CATEGORY

01

### AASHRAYA

RADHIKA AGRAWAL, TULIKA UPADHYAY, DEV KANSANA, SHIVANIE KHANKA, MITS GWALIOR



#### JURY COMMENT

Excellent choice rethinking for the urban poor. Clearly illustrates that Design is for everyone and the Slum dwellers with small cramped spaces need it most. Well worked out details, due consideration given to isolate in small spaces. A bonus space as a work area was good thinking. The development of a module and using that to create a settlement went way beyond the brief.

02

### NATURE CAPSULE

ADITYA GUPTA, MANIT BHOPAL



#### JURY COMMENT

Great all round effort along with excellent graphical presentation and walkthrough. The jury was impressed with your detailed thinking about how dining furniture can be converted into a work station.

# RESIDENTIAL CATEGORY

03

LOCKED WITH NATURE

SURYA PRAKASH, ROHAN TALREJA, SANYA QURESHI, SUNIDHI RATHORE IPS ACADEMY

## JURY COMMENT

Good zoning and interesting planning allowing nature to come in. Clearly illustrated material palette, hardware and technology solutions. More effort could have been put in creating customized solutions and not ready available ones.



## Participating Institutes:

Indore : SOA IPS ACADEMY, INIFD, SDPS COLLEGE, VIRTUAL VOYAGE ZICA, VAISHNAV INSTITUTE.  
Bhopal : INIFD BHOPAL, MANIT, GOVERNMENT WOMEN POLYTECHNIC, BAGALMUKHI COLLEGE OF ARCHITECTURE, RKDF UNIVERSITY.  
Gwalior : MADHAV INSTITUTE OF TECHNOLOGY AND SCIENCE, ITM UNIVERSITY.  
Jabalpur : HITKARINI COLLEGE OF ARCHITECTURE AND TOWN PLANNING.

There was a lot of effort put up in the submissions but we valued basically 2 things the overall concept and the attention to details. Design is not merely a visual impact, it's not how it looks or the current trends and fads, it's how it works and how it will weather. The entries which showed true potential in detailing and thinking about how to make it work were obvious winners.



## The Secretary speaks

Dear Friends,

Greetings from myself and on behalf of all the members of the NEC. It is time once again to let all of you know about activities and the happenings of the past month.

We began with Let's Talk with the Expert Series on the topic- "Healthy homes and importance of indoor air quality", a webinar in collaboration with Nippon Paints India, where our President Jabeen was the keynote speaker & panelist. Moreover, AYDA with IIID's support is receiving tremendous support from student's community. As part of the campaign, some of the chapter & centre chairmen will be invited to give a guest lecture on "The need to design time relevant spaces and change in the design approach post the pandemic situation"

Further, an important milestone was achieved when the 20 IIID Navigators for the Term 2019-21, our Corporate Team mates and partners in our search for the Vision North were invited for online discussions individually to connect with IIID. I am happy to share that in these difficult times which come with a lot of challenges; all of them appreciated this gesture from IIID. The frank and informal discussions will definitely help these Brands to turn challenges into opportunities.

The orientation meetings for all individual Portfolios were also concluded with all the 33 Chapter & Centre managing committee members, as well as the Office Bearers. All the NEC members shared their vision and the path to accomplish tasks with the managing committee members and I believe that this will go a long way in benefitting the primary members of IIID with resultant programs & events.

We are taking the collaboration with our sister organizations ahead, as mentioned in my last month's message, and further looking for membership engagement, education collaboration, sharing centres for excellence, collaborating on awards and real time partnership in all relevant events with all our 5 Collaborators.

The Constitution committee of IIID is working diligently and having weekly meetings since the past 8 weeks, to pour through all important aspects of the IIID Constitution and to try and make it foolproof and easy to understand. The Committee will also deliberate on and intends to put in place a system to educate the primary member about the contents of the Constitution.

The IIID DCC, the Design Culture Collaborative is a huge success, receiving 800+ entries from across all the chapters & centers. The jury process will begin in first week of August and eminent personalities shall judge and shortlist the entries in various categories. Very soon, IIID shall have its own pool of talented writers, artistes and performers, who can add immense value to all our events & programs.

The modalities for IIID National Quiz are also being worked out and soon the information and details will be shared with all you. Another very important and relevant initiative on the cards is a book on Indian Crafts, the aim being to identify, integrate & incite the innovative uses of Indian crafts in Interior Design practice. Keep watching this space for more !!

As usual, wishing you all, JOY & HAPPINESS !!

**Jignesh Modi**

National Honorary Secretary, IIID



## AHMEDABAD

### *The Unlocked souls .....*

During the Pandemic while the world was at a standstill, the Interior Designers of Ahmedabad found opportunities to explore their creative pursuits.

Hiren Patel said "I had a wonderful time with my family, one room in my house became a multifaceted space, from my office to the online college for my children and also the yoga room for my wife. The daily chores and activities had to be done in a more creative way that is what I felt. I picked up many things during this unexpected break. I finally mastered my handstand, and got inspired by the tiny little details of my home to create quite some watercolour pieces".

We are happy to share that some of the artworks of Hiren Patel would now be evolved as a design series of a renowned Carpet brand.

Ranna Parikh shared "The lockdown helped me create a new routine of sorts. Besides getting to spend loads of time with my family, playing board games and badminton in the evenings, we even found joys in cooking and cleaning together too! The morning time was reserved for connection with the staff, team of workers and clients over zoom. The lockdown got me back in touch with friends from across the globe. Lot of reading and writing filled up my waking hours. In addition, most importantly I got back to playing the sitar, which has always been something close to my heart. Life is indeed wonderful!"

Chandni and Sagar Shah a young designer couple shared their wonderful experience of farm life during this period saying, "We started exploring things that we always wanted to do along with 'Work from Home'. We were building our weekend home on the farm and this gave us a good chance to revisit the whole lifestyle along with developing the detailed designs for it. I started to know more about farming, trees, growing vegetables, herbs, and fruits. I tried my hands on farming as well. We started growing lots of fruits and vegetables and that gave us a sense of connection with the earth in some way, it was therapeutic. Meanwhile, Sagar took up his love for illustrations and visual arts. He developed a series of illustrations around people in times of COVID from some women in remote villages if Kutch to someone travelling the globe in their jets. He also tried his hands on digital motion art to express various moods and emotions around COVID. We both being design professionals, this time gave us focused time to flow more ideas and come up with really amazing projects and collaborations."

Mentioned above are a few experiences shared by the Interior designers of Ahmedabad depicting how the lockdown was not able to stop these creative souls from exploring their passion and new horizons as well for example painting, music, and farming. We wish the wellbeing of all and are determined to continue sharing some more inspiring stories from Ahmedabad.



## GOA

### *IIID Goa Centre Founder's Day Celebration 8/16/2019*

Service doesn't have to be big and grandiose to be meaningful and make a difference. The Managing Committee of IIID Goa donated a much-wanted printer to Disha Special School on the occasion of the Founder's Day.

We had good interaction with the special students who showed us their skills at making file-folders, Diwali lights and paper-bags at the vocational training workshop when we visited them. Along with the printer, we also offered some snacks to the teachers and chocolates for the kids. This event was nicely executed with a lot of pride and emotions while all MC members contributed equally towards the expense. Overall a very satisfying event.



### *Women Day Event- Design(h)ers*

International Women's Day is an annual celebration of women and their achievements, demonstrating why empowering women is beneficial for everyone. IIID Goa took this opportunity to acknowledge the Women Designers of Goa. In all, 46 women designers from Goa were felicitated through the presentation of their work and achievements in their respective field of Design.

ArShilpa Gore Shah from Mumbai was the guest speaker for this event. Her presentation was very inspiring and she gave insight of interior and well as architecture projects. This was followed Panel discussion on "Challenges faced by Women Designers & Entrepreneurs in the 21st Century". ArSnehalataPednekar moderated the same with ArShilpa Gore Shah, Ar Rita Mody Joshi, ArReshmaSukhtankar and MsFauzia Khan as panelists.

Event started with the Chairman's address and he stated the importance of Women in our life and that we need to celebrate women achievement in the field of Art, Architecture, Interiors, Design and Entrepreneurship. MsRushinaChanekar was Event Host. Ar Siddha Sardessai with support of ArSuhasGoankar and ArSumedhNaik compiled the presentation. Kone Elevators were the event sponsors.



### *Best SPACE DESIGN AWARD 2020 for Thesis Students of Goa College of Architecture*

As a part of Educational events, IIID Goa Centre started this initiative for Thesis students of Goa college of Architecture by giving IIID Rolling Trophy and cash benefits and Certificates for winners and Runners up. Objectives were to promote Design and Generate new ideas for space design, to generate interest in the field of Interior design and to allow emerging designers the opportunity to gain exposure to competition. Criteria for Judgement was Ideation, Interior exterior relationship, Climatology, Technical knowledge application, Sustainability in terms of materials and technology, Cost effectiveness and practicality.

Jury was held on 21st of July on the WebEx platform. Each student was given 5mins to explain their proposal and 5 mins for Q and A. 16 students participated and the response was fantastic. All the Jury members were very pleased with the students' work. Arch Ashwini Kumar Prabhu, Prof. AnirudhPawar and Arch SiddharthNaik were the Jury members.

**Winner – Miss SaloniPandit**

**1st runners up – Miss Jency David**

**2nd Runners up – Miss Diantha George**

The Rolling Trophy is designed by Ar. Ashley Mascarenhas, Managing Committee member of IIID Goa Centre.





## BANGALORE Unmasked 2.0

4/7/2020 - IIID Bangalore

The second season of Unmasked by IIID BRC, started off with first episode featuring Ar. Sandeep Khosla and Ar. AmareshAnand titled 'The Practice'.

The narrative started with early days of the practice, tempered with unforgettable site experiences. Khosla Associates took the viewers on a virtual voyage and experiences spanning homes, hospitality spaces, school and resto bars. The session concluded with travel inspired takeaways and collaborative design stories. It left us wanting more of their sensitive portrayal of tropical design principles so deeply rooted in the Indian sub-continent.

The event was sponsored by Quattroluxe a PC Sampath Ram Ceramics venture, Bangalore.

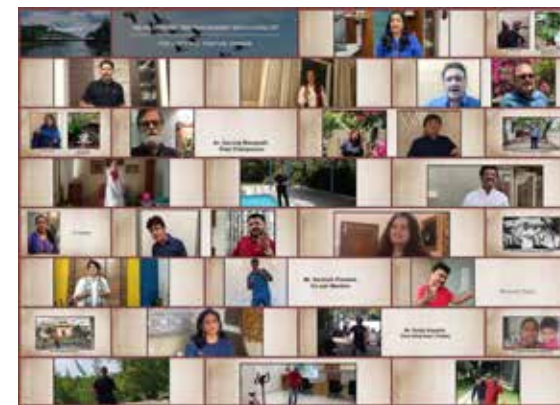


## BHOPAL

### Webinar on responsible construction

6/22/2020

The IIID Bhopal Regional Center in collaboration with the Department of Civil Engineering, Sagar Group of Institutes, Bhopal conducted a webinar on "Sustainable Construction" on 22 June 2020. This expert session was delivered by Ar. MayoreeSaxena and was designed for professionals and students. The session focused on creating awareness regarding the effects of carbon footprints generated by the construction industry and the strategies to deal with the consequences. This interactive session provided some key insights on sustainable construction technologies and processes that are resource-efficient and environmentally responsible, throughout the construction life-cycle including siting, design, construction, operation, maintenance, renovation and deconstruction. In addition, this session provided food for thought by promoting the concept of "sustainability starts at home," and highlighted how a professional/student who is living a sustainable lifestyle herself could be more inspired to drive and create sustainable projects.



## HYDERABAD

### IIID-HRC Song

7/5/2020

On 5th July 2020,

IIID-HRC team 2019-2021 completed one year of its tenure. Team thanked every one of the members of IIID-HRC for great support.

On this Occasion

Our Past Chairpersons, Managing Committee and singers came together to present a song of Togetherness and Happiness...

UtheSabkeKadam

This song was released on the occasion of IIID-HRC one year completion .Video on [https://youtu.be/elt9hwf\\_7hE](https://youtu.be/elt9hwf_7hE)



## JAIPUR

### Dialogues From Within - Webinar 2

7/3/2020

A series of Webinars where JRC will showcase their own Architects/Designer members, their projects, design philosophy and how they operate.



## CHENNAI

### Mahob Mayon Talk Series

5/18/2020

This Lecture series will educate every one of us and facilitate for our better prospects of our creative world. To emphasize we formulated this series as "MAHAB MAYON"



## COIMBATORE

### Coimbatore Center goes Green

As a part of the Environment Day celebrations, we planted saplings. True to the spirit of the center, we believe in sowing seeds today for a better tomorrow. We individually planted saplings in our own places to inculcate and celebrate the importance of a healthy environment around us. As designers of the built environment, we believe that the spaces are not just aesthetically pleasing and functionally efficient, but also believe in creating healthy living spaces with green. As we plant these saplings, we celebrate that idea and encourage green practices like terrace farming, homegrown food, and green productive landscapes in the city.

Grow a healthy tree, grow your happy community!



## KERALA

### Future of Workplaces in Kerala

IIID Kerala Chapter is associating with Government of Kerala and IT Department to design a prototype concept and guidelines for 100 Futuristic Co-working spaces spread across the state.

We the Design Team of IIID Zone FOCUS (Trivandrum, Kollam & Pathanamthitta) have worked to define a sustainable model for the co-working space of the future. Covid-19 pandemic has made an unprecedented shift in our lives! Based on our research it's time for a "Paradigm Shift" in the current IT work culture, it's time to rethink and reset to follow a healthier work-lifestyle. The world is coming closer and better connected through advancements in technology. This will help us to re-orient and get prepared for a new normal of de-centralized working methods.

We propose that the facility should capture the "soul and story of the region". It should revitalise the lost values of the decentralised village culture in our region; bringing back the activities associated with a cross road ('Naalkavala'), which connects working, collaborating, socialising and wellness, a vital part of the lifestyle of our forefathers. Work Near Home with Adaptive reuse of Non profitable properties/ Infrastructure, could be the solution to this complex problem.



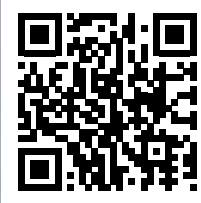
## MUMBAI

### Celebration of world environmental day 5th June & international yoga day 21st june

6/30/2020

The initiative "Plant a Memory" was announced at Dream Weavers group by IIID President Jabeen Zacharias on the occasion of "World Environmental Day". Mumbai being in lockdown, committee members celebrated the day in individual capacity. A pipal sapling has been planted "THE IIID FAMILY TREE" in a community garden, next to Arabian sea, Matunga-West, on behalf of entire IIID family. This idea & the act was carried out by Chapter Chairperson LeenaNimbalkar.

"International Yoga Day" was celebrated with a webinar arranged by IIID MRC on "Design Inner Consciousness" with renowned Consciousness Coach ManojLekhi. It was initiated by Chairperson, lead by Special Invitee AteetVengurlekar & supported by committee members. Yoga is harmony between mind, body & soul. Human beings concentrate mainly on outer body by taking care of physical health via good food & exercises. The take home was to understand the strength of inner consciousness by learning & adopting simple techniques to fetch amazing results inside-out.



## PUNE

### Trade Connect

11/19/2019

A one of its kind event for the Trade fraternity was held in November 2019 with an attempt to understand their concerns regarding the current market status and their connections as well as expectations from the Design Fraternity.

A music show marked the start of this event. The Panel discussion was moderated by Ar. TusharKothawade and the panelists were - Ar. Hari Agashe, Ar. AshwinLovekar, Mr. Mohan Patel, Mr. Shankar Patel, Designer Rajiv Shah, Mr. JeegneshVadasola, Ar. Ganesh Kumar Wable, Mr. ShabbirTavawala.

The event was followed by a fellowship dinner.



## SURAT

### Feed Your Mind

5/28/2020

IIID Surat Regional Chapter and IIA Surat Centre have started organized an event FEED YOUR MIND on Zoom application on an online Platform on 28th May 2020 at 5pm. Total 100 plus participation attended it. The whole event was divided into two part first part was conducted by motivational speaker CHIRAJ DESAI, he talk on the topic GET INSIDE READY TO Go OUT SIDE and in second part was conducted by PallavKhandwala ( Vice Chairman Trade) on CHEMICAL WATERPROOFING AND TILE ADHESIVES.



## VADODARA

### Environment Day 6/14/2020

Topic – Kirti Mandir – Fame Of Vadodara

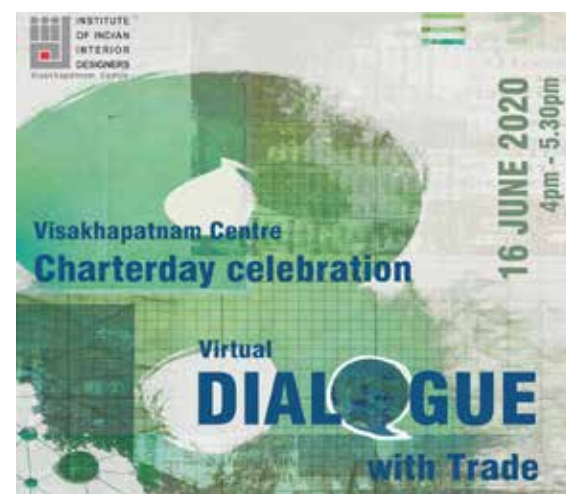
KirtiMandir, also known as the Temple of Fame, is located at a picturesque spot near the Vishwamitra Bridge in the city of Vadodara. Built in 1936 as a part of the Maharaj's Diamond Jubilee celebrations, it is said to be commissioned by MaharajSayajiraoGaekwad III in the loving memory of his ancestors.

The building is E-shaped, featuring beautiful elements like balconies, terraces, tombs, domes and a brilliantly carved 35 meters high central shikhara. The exterior is simple but impacting, but the temple interiors showcases impressive pictures, murals based on themes like Gangavataran, Life of Meera, the battle of Mahabharat and NatirPoojan and some rare paintings from the famous artist Nandal Bose. The tradition of oriental refinement is depicted throughout the place covering arts, literature, philosophy and science in its design, execution and use.

The golden edifice is the go-to place of the people of the city, lit up during the Diwali festival. Rangoli competition is also organized here, where amateurs and masters alike come to exhibit their skills and keep the tradition alive.

The Institute of Indian Designers, Vadodara Regional Chapter recently celebrated Environment Week by planting saplings on the campus of KirtiMandir, perfect amalgamation for the confluence of design and culture.

ArMayur Shah - Chairman -IIID VRC (2019-2021)



## VIZAG

### Virtual Dialogue with Trade

7/16/2020


IIID Visakhapatnam Chartered on 16th June 2012.

It is our immense pleasure to announce that IIID Visakhapatnam has completed 8 Years of togetherness with Trade and Designers.

To commemorate the day, a "Dialogue with Trade Members for New Normal Economic Strategy," was held. The event was well attended by the members from trade and designers, discussions were held on going digital and virtual.

# Facilitating Architecture



  
**Designer Publications**  
 Kerala Pvt. Ltd. | **FACILITATING ARCHITECTURE**

**detail** **വിശ്വകർമ്മ** **വിശ്വ** **inscape** **BUILDING SERVICES & UTILITIES** **IIID** DESIGNER INSTITUTE OF INTERIOR DESIGN

39 / 4722, DPK Towers, R. Madhavan Nair Road, Kochi-16, Ph: +91 484 236 7111, 235 2726, Email: info@designerpublications.com

## A Rite of Passage

The cut-throat competition that today's work industry poses makes choosing the right alma mater essential for the children and responsibility for their parents. A crucible in this process of empowerment is the incubation space that we call our second home- our school. The designing fraternity has been creating these avenues for development through a relaxed and user-centric approach. Along with the actual education system, these spaces help unleash the positive reflexes and creative attitudes, turning a child into a holistically developed and empowered individual.

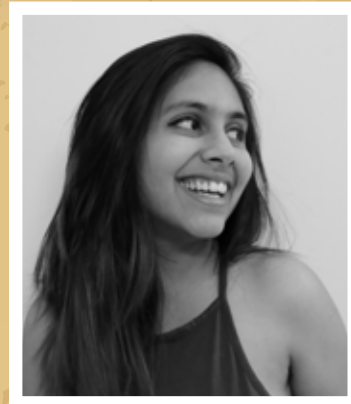
A pedagogical discourse stems from the last issue of Inscape that featured projects by pioneer workers who indeed reiterated lucid ideas of experiential learning. The new designs allow tender minds to break free from societal constructs and venture through the maze of multi-functional spaces. These spaces tap into the imaginative idiosyncrasies of a child and make this rite of passage an evocative journey filled with learning.

### Caught in a Liminal Realm

In a country like ours, the right to education is still a fantasy for many-a-one. We are juggling with multi-fold development levels, and with it comes a thesis and an antithesis to the design framework. On one hand of the strata, parents demystify the ingrained belief of egg-crate schools and look to novel approaches of building. While on the other side of the coin, a pumping revolution demands only four walls and a headmaster. With such stark contrasts, it is our responsibility to innovate, yet keep in mind what the user requires.

The story of a public charter school in Chicago called the Academy for Global Citizenship (AGC), thrives on this principle of the user-centric enterprise. The founder, Sarah Elizabeth Ippel, in collaboration with Studio Gang Architects, focused on creating an inquiry-based learning space for low-income and minority communities. Here the students not only learn English and Spanish alphabets but also grow vegetables and eat their harvest. An effort that drives education and builds a power-and-food conscious community.

The ecosystem that a learning environment reinforces cannot ever be static. It is forever liminal. The designs have been molding with changing times. First, to deal with the surge of enrollment, designers reconfigured existing spaces to incorporate bigger and better classrooms. Then, moving away from the traditional one-way learning, multiple rows of desks were rearranged into an open plan layout that blurred the lines between solitary education and interactive learning. We then incorporated spaces that disseminated knowledge but not through textbooks. Theatres, multi-sensory rooms, playgrounds, and a diverse environment allowed children to explore, experiment, fail, and start over. Finally, and in the current scenario, when a two-year-old knows better how to arrange app icons on the screen than to arrange LEGO bricks, we are building to cater to a technologically tied up generation.



Radhika Jhamaria

### Notebook or Note 2?

The digital revolution is quickly transcending into the learning environment. With knowledge already at our fingertips, more emphasis lays on maker-spaces that stimulate the unfettered creativity of the students. High levels of personalization techniques of teaching and expanding opportunities of exploration paved the way for tools such as 3D printers, projected screens, and writable surfaces to become regular commodities. Architects will have to accommodate these advanced technologies and build to integrate a variety of study options seamlessly.

Schools of the future will be less of paper-scrolls and inks and more of models and debate. They will be urban centers of collaborative working and network building. It is safe to say that modularity will not be the answer with an array of teaching, learning, and assessment choices. As small grouped interactive learning popularizes, schools will not be large institutions of repetitive units but a confluence of more modest, flexible spaces.

### Biophilic state of mind

Scientific research proves that the sensorial development, which is critical for a healthy life, happens at schools with an exposure to the outdoors. However, the riveting stature of screen-time is driving children away from the world of natural elements. Schools are modes to re-affiliate them with nature and undo the negative impact of industrialization. Green spaces should be intertwined with the learning environment. Natural light and playful outdoors have a positive effect on students' mental health and make them feel more engaged. Schools with biophilic design features are a definite requirement for the future to help reduce stress and other chronic mental illnesses in young minds.

Designers have played a massive role in diminishing the seminar-style directional learning. This concretes the belief that as we remodel our spaces, we bring about reforms. As we approach the progressive classrooms of the day, we need to rethink our education system again. We need to investigate trans disciplinary questions such as pace of learning, collaborative efforts, and research technologies so that we can design to harness knowledge in the most efficient and intelligent ways.

## Address

### INCREATION ASSOCIATES

9H, Vardan Tower,  
near Vimal house, Navrangpura,  
Ahmedabad, Gujarat 380009  
Tel: 099092 86947  
Web: [www.increationassociates.com](http://www.increationassociates.com)

### USINE STUDIO

Gold Leaf Complex, 301/302,  
Akota Stadium Rd,  
Anurag Society,  
Sheetal Nagar, Akota,  
Vadodara, Gujarat 390020  
Tel: 0265 231 1666  
Web: [www.usinestudio.in](http://www.usinestudio.in)

### SHAILJA HARISH DESIGN STUDIO

9 A, Vardan Tower, Lakhudi Talav,  
Near SP Stadium, Navrangpura,  
Ahmedabad, Gujarat 380014  
Tel: 098254 94390  
Web: [www.shailjaharish.com](http://www.shailjaharish.com)

### I.M. KADRI ARCHITECTS

4A, Shivsagar Estate,  
Dr Annie Besant Rd, Worli,  
Mumbai, Maharashtra 400018  
Tel: 022 2497 3630  
Web: [www.imkarchitects.com](http://www.imkarchitects.com)

### FLYING ELEPHANT STUDIO

Thekaekara house, Off  
Banaswadi 100ft main road,  
2nd G cross,  
HRBR layout 1st block,  
Kalyan Nagar,  
Bengaluru, Karnataka 560043  
Tel: 080 4161 4966  
Web: [www.flyingelephant.in](http://www.flyingelephant.in)

### MANCHANDA ASSOCIATES

B-83, Block B, Shivalik Colony,  
Malviya Nagar, New Delhi,  
Delhi 110017  
Tel: 011 2669 1407  
Web: [www.manchanda.net](http://www.manchanda.net)

### SEINE DESIGN'

Péniche Le Chaudron,  
Port de la Rapée, 75012  
Paris, France  
Tel: +33 1 45 50 30 53  
Web: [www.ronzatti.com](http://www.ronzatti.com)

### NIKHILESWAR BARUAH

House No. 39, Nizarapar,  
Chandmari, Guwahati-781003,  
Assam  
Phone: +919898991368  
Email: [bgnikhil@gmail.com](mailto:bgnikhil@gmail.com)

## Advertisers' Directory

FUNDERMAX	3
HAFELE	5

## Compass



### Designing for good health

We should always remember that a healthy mind resides only in a healthy body. When we are in good health of both mind and body, it helps one maintain the required energy level to achieve success in life. It should be the goal that all of us must strive to achieve.

What kind of space makes us feel positive and hopeful about the future? In our world, there exist many different types of health-related issues that arise along with the growing population. Today, as we struggle through a global pandemic like COVID -19, it is essential that we need health centres that ensure patients safety, well being and enhance their physical and mental health and even the ones around them. These spaces should ensure to bring in ample ventilation and lighting, provide comfortable furniture, resonate in balanced and neutral colour tones, blend with nature and invoke the feeling of a home. Interior design aids in psychologically altering the mood of a person, even the materials impact on our senses, helping us heal.

We know that healthcare centres should invite patients, doctors, visitors, caretakers and staff to come together through commonly shared spaces and cherish a sense of togetherness. As we step into a new era of livelihood, were new norms and measures have taken control of our lives. It is a dire need that architects need to rethink on designing health care centres that safeguard and heals those under treatment and their loved ones.

Architecture plays a significant role in designing a functional healthcare space rather than a room inside four walls. Design is an evolution; through time, hospitals have transformed way better, with improved standards and technology that comes together to heal us and free us from pain and suffering.

The world has never been any better, but still, in the darkness, there lies another virus or disease unknown to us, that we shall confront. As master builders of today and tomorrow, let us hope for that guiding light to re-live and overcome any illness that comes our way through design.

*Rema S Kartha*

**Dr. Rema S Kartha**

Co-Editor

E-mail: remaskartha@designerpublications.com



# Inscape

THE OFFICIAL PUBLICATION OF IIID ₹100

a new  
canvas  
of creations

### Subscription Form

Name : .....

Address : .....

City : .....Pin : .....

Tel : .....Mob : .....E-mail : .....

Enclosed MO/DD/Cheque No .....Dated : .....

Drawn on (Name of the Bank) : .....For Rs.:.....

in favour of 'Designer Publications Kerala Private Limited, Kochi'. For outstation cheques please add Rs. 50/-

✓	Period	No. of Issues	Cover Price (INR)	You Pay (INR)	You Save (INR)
<b>Print-Edition</b>					
	1Year	12	1200	1150	50
	2Year	24	2400	2300	100
	3Year	36	3600	3440	160
	5Year	60	6000	5700	300
<b>E-Edition/Digital</b>					
	1Year	12	1200	575	625
	2Year	24	2400	1150	1250
	3Year	36	3600	1720	1880
	5Year	60	6000	2850	3150

Please use this info to make the payment via Cheque /Demand draft/RTGS/NEFT towards the subscription.

Beneficiary Name : Designer Publications Kerala (P) Ltd.  
Bank Account No. : 1701008700214140  
Bank's Name : Punjab National Bank

Branch Name : M G Road, Ravipuram, Kochi  
Account Type : CC  
NEFT/IFSC Code : PUNB0170100



39/4722, DPK Towers,  
R. Madhavan Nair Road  
Ravipuram  
Kochi, Kerala - 682016  
Tel: 0484 236 7111  
9846349295  
info@designerpublications.com  
www.designerpublications.com

Please visit for online Subscription: [www.iiidinscape.com](http://www.iiidinscape.com)

\* Print and Digital versions are free for IIID members only.

# DP **BUILDING SERVICES & UTILITIES**



---

A MULTI-DISCIPLINARY  
**MAGAZINE FOR ALL  
BUILDING SERVICES  
UNDER ONE ROOF**

---

ELECTRICAL &  
ENERGY MANAGEMENT

PLUMBING & WASTE  
MANAGEMENT

HVAC &  
AUTOMATION

FIRE, SAFETY  
& SECURITY

VERTICAL  
TRANSPORTATION

FACILITIES  
PLANNING

LIGHTING

ACOUSTICS